



**EDUCATE.
INSPIRE.
GROW.**

**Your
journey of
possibilities**

Level 3 International Foundation Diploma for Higher Education Studies

**UNIVERSITY
PROGRESSION
2023–2024
Edition 1**

**For more
information
contact us
today**

NCC Education UK (Head Office)

Second Floor, Adamson House
Towers Business Park
Wilmslow Road, Didsbury,
Manchester
M20 2YY
United Kingdom

t : +44 (0) 161 438 6200
e : customer.support@nccedu.com
w : www.nccedu.com

CONNECT WITH US #NCCedu



[facebook.com/
NCCEducation](https://facebook.com/NCCEducation)



[twitter.com/
ncceducation](https://twitter.com/ncceducation)



[linkedin.com/company/
ncc-education](https://linkedin.com/company/ncc-education)



[instagram.com/
ncc_education](https://instagram.com/ncc_education)



[youtube.com/channel/UC-
_P_V7gRzHAYiOfVv1ANKg](https://youtube.com/channel/UC-_P_V7gRzHAYiOfVv1ANKg)

**WE ARE ALSO ON
WEIBO &
WECHAT**



About this booklet

*All information in this booklet
has been checked for accuracy
by NCC Education, however it is
subject to change.*

*This booklet is a guide only. For
the most up-to-date information
on the university you wish to
consider, please check the
university's website and contact
their international admissions
team directly.*

**For the latest electronic
version of this booklet,
please visit
[www.nccedu.com/
university-progression/](http://www.nccedu.com/university-progression/)**

Introduction

Progress to university with NCC Education qualifications.

Originally established as an initiative by the British Government in 1966, NCC Education is a UK awarding body and global provider of education.

Working with some of the world's leading British academics and industry, the NCC Education qualification portfolio is continually expanding to align with the ever-growing needs of employers and higher education institutes alike.

Offered by a network of over 200 accredited partner centres around the world, our qualifications allow students to continue their studies with an accredited partner centre, online, overseas or at an international branch campus in-country.

We are now recognised by over 90 universities, institutes, and business schools in many countries, including the UK, Australia, Canada, Cyprus, Ireland, France, Germany, Japan, New Zealand, and the USA. Students are also eligible to apply to several international branch campuses, including campuses in China, Malaysia, Mauritius, Singapore, UAE, Uzbekistan, and Vietnam.

This enables students to apply for an undergraduate degree programme in year 1 or with advanced standing/credit exemptions towards years 2 or 3. There are also a range of options for students looking to study at postgraduate level.

If you need further advice on progressing to further study with your NCC Education qualification, you can contact our customer support team in one of the following ways:

- ① customer.support@nccedu.com
- ② +44 (0)161 438 6200

Note: Many other universities will accept NCC Education qualifications, this booklet simply lists those with whom we have formalised recognition or agreements.

NCC Education qualifications

Level 3	Level 3 International Foundation Diploma for Higher Education Studies	L3IFDHES
	Level 3 Diploma in Business	L3DB
	Level 3 Diploma in Computing	L3DC
Level 4	Level 4 Diploma in Business	L4DB
	Level 4 Diploma in Computing	L4DC
	Level 4 Diploma in Computing (with Business Management)	L4DC BM
Level 5	Level 5 Diploma in Business	L5DB
	Level 5 Diploma in Computing	L5DC
	Level 5 Diploma in Computing (with Cyber Security)	L5DC CS
	Level 5 Diploma in Computing (with Business Management)	L5DC BM
Level 6	* BSc (Hons) Business Computing and Information Systems	BSc BCIS
	* BSc (Hons) Cyber Security and Networking	BSc Cyber
	** BSc (Hons) Computing	BSc Comp
Level 7	Level 7 Diploma in Business Management	L7DBM
Pre-Masters	Pre-Master's in Business	PMB

* Validated and awarded by the University of Central Lancashire (Programme delivered online via the NCC Education Virtual Learning Environment)

** Awarded by the University of Greenwich (Programme delivered in a classroom environment via selected NCC Education Accredited Partner Centres)

ACADEMIC LEVELS AT A GLANCE

RQF LEVEL	QUALIFICATION		
8	NVQ 8	Doctorate	
7 <ul style="list-style-type: none">• Level 7 Diploma in Business Management +MBA Top-Up Awards through University of Plymouth and Cardiff Metropolitan University• Pre-Master's in Business	NVQ 7	Master's Degree / Postgraduate	
6 <ul style="list-style-type: none">• BSc (Hons) Computing• BSc (Hons) Business Computing & Information Systems	Higher / Degree Apprenticeships / NVQ 4, 5 & 6	Honour's Degree	
5 <ul style="list-style-type: none">• Level 5 Diploma in Business• Level 5 Diploma in Computing• Level 5 Diploma in Computing (with Business Management)• Level 5 Diploma in Computing (with Cyber Security)		Foundation Degree, HND	Diploma in Higher Education
4 <ul style="list-style-type: none">• Level 4 Diploma in Business• Level 4 Diploma in Computing• Level 4 Diploma in Computing (with Business Management)		HNC	Certificate in Higher Education
3 <ul style="list-style-type: none">• Level 3 Diploma in Business• Level 3 Diploma in Computing• Level 3 International Foundation Diploma for Higher Education Studies		Advanced Apprenticeship / NVQ3	Vocational A Level BTEC Cert / Diploma
2	Apprenticeship / NVQ2	BTEC First Diploma	O' Level / GCSE Grades 9-1
1	Traineeship / NVQ1	Primary School / GCSE Grades 3-1	
ENTRY	Basic Skills / Skills for life		



Agreements and recognitions by country

Australia

CQUniversity
Curtin University
Deakin University
La Trobe University
Southern Cross University
Swinburne University of Technology
The University of Queensland
University of Canberra

Canada

Fraser International College
Lakehead University
Thompson Rivers University
University Canada West
York University

China

XJTLU Xi'an Jiaotong-Liverpool University

Cyprus

University of Nicosia Medical School

England

Anglia Ruskin University
Arts University Bournemouth
Aston University
Birmingham City University
Canterbury Christ Church University
De Montfort University Leicester
Keele University
Kingston University London
Leeds Beckett University
Liverpool Hope University
Liverpool John Moores University
London Metropolitan University

Manchester Metropolitan University
Middlesex University London
Northumbria University
Nottingham Trent University
Oxford Brookes University
Royal Holloway, University of London
Sheffield Hallam University
Teesside University
University of Northampton
University Centre Croydon
University for the Creative Arts
University of Bedfordshire
University of Central Lancashire
University of Derby
University of East London
University of Essex
University of Exeter
University of Gloucestershire
University of Greenwich
University of Kent
University of Leeds
University of Leicester
University of Liverpool
University of London (International)
University of Northampton
University of Nottingham
University of Plymouth
University of Sunderland
University of Sussex
University of the West of England (UWE Bristol)
University of Westminster
University of Worcester
University of York

France

Grenoble Ecole de Management

Germany

IUBH International University of Applied Sciences

Hong Kong

University of Sunderland in Hong Kong

Ireland

Limerick Institute of Technology
National College of Ireland

Japan

Nagoya University of Commerce and Business
Temple University Japan Campus (TUJ)

Malaysia

Curtin University Malaysia
Swinburne University of Technology, Sarawak Campus
University of Nottingham Malaysia

Mauritius

Curtin University Mauritius

New Zealand

Massey University
Media Design School
Unitec Institute of Technology
Victoria University of Wellington

Scotland

Abertay University
Glasgow Caledonian University
University of Strathclyde

Singapore

Curtin University Singapore
James Cook University Singapore
SIM Global Education, Singapore
Institute of Management

UAE

Curtin University Dubai

USA

Berkeley College
Carroll University
Eastern Connecticut State University
Heidelberg University
Humboldt State University
Southern Oregon University
Temple University
University of Idaho
University of North Alabama

Uzbekistan

Westminster International University in Tashkent
Turin Polytechnic University in Tashkent

Vietnam

British University Vietnam
RMIT University Vietnam

Wales

Aberystwyth University
Bangor University
Cardiff Metropolitan University
Swansea University
University of South Wales

Worldwide

ACCA
University of London (International)

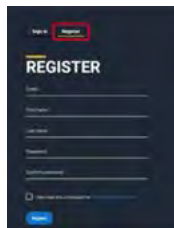
UCAS application guide

Please see the following link for further support: <https://www.ucas.com/undergraduate/applying-university/filling-your-ucas-undergraduate-application>

If you have any problems following the below steps, please contact UCAS or your centre directly for further help and advice: <https://www.ucas.com/contact-us>

1 TO GET STARTED

Visit the new UCAS Hub. Make sure you are on the 'Register' tab and then fill in your details to create an account: <https://accounts.ucas.com/Account/Login>



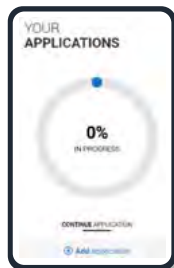
2 Once you have registered on the UCAS Hub, you will be sent an email asking you to verify your account. Follow the instructions.

3 After verifying your account, you are ready to sign in. Return to <https://accounts.ucas.com/Account/Login> and go to the 'Sign in' tab.



4 Take some time to explore the UCAS Hub.

5 TO APPLY
Go to the home dashboard on your UCAS Hub profile. Click 'Your Applications'.



6 IN THE 'EDUCATION' SECTION, click 'Add place of education'.



7 TYPE IN THE NAME OF YOUR SCHOOL

Select your school (most international schools are not listed; if yours is not listed type in the name of the school and add it). Leave the exam centre number blank.



8 INPUT THE DATES

of when you started your school and when you finished

9 PICK 'FULL-TIME'

in the type of study option

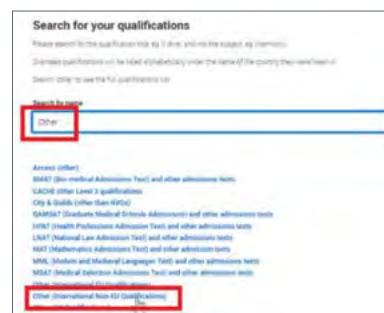
10 'Do you, or will you, have any qualifications from this centre?' Select 'Yes'

11 SAVE

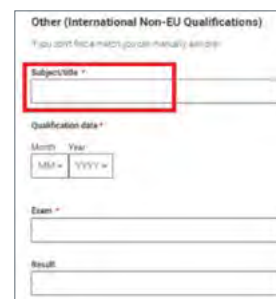
12 **CLICK 'ADD QUALIFICATIONS'**
It is advisable to have your transcript(s) next to you so you can copy the information for each module as required.



13 NCC Education's qualifications are not listed in the drop-down. Type 'Other' and select 'Other (International Non-EU Qualifications)'.



14 **IN 'SUBJECT/TITLE'**
type in the title of the qualification, for example 'NCC Education Level 3 International Foundation Diploma'



15 **SELECT A QUALIFICATION**
(see your NCC Education transcript)

16 **IN 'EXAM'**
type the name of the awarding organisation i.e. NCC Education

17 **IN 'RESULT'**
put your overall numerical grade (if you have it, if you don't have it yet you can leave it blank).

18 **IN 'MODULE/UNIT'**
type in the module title, qualification date and the results if you have any for this qualification. You might not have them all yet in which can just leave any awaiting results blank. To add more, click 'add another module'.

19 **SAVE IT!**
You can add another qualification and come back to edit as needed.

20 The Unique Learner Number (ULN) can be left blank.

21 **FOR 'PLEASE STATE THE HIGHEST LEVEL OF QUALIFICATION**
you expect to have before you start your course', select 'Below honours degree level qualifications'

22 **MARK SECTION AS COMPLETE.**

23 **COMPLETE THE REST OF YOUR APPLICATION.**

CONGRATULATIONS
YOU ARE NOW ON
YOUR WAY TO
STUDYING IN THE UK

Note: Note: Non-EU International students can usually apply to UCAS at any time between 1st September and 30th June in the year preceding the academic year that studies commence. However, most students apply well before 30th June to make sure that places are still available on their desired courses.

University partner qualifications in your home country

NCC Education collaborates with UK university partners to offer 'top-up' degrees that can be studied in your home country without the need to study overseas:



University of Central Lancashire BSc (Hons) Business Computing and Information Systems

For students with the NCC Education Level 5 Diploma in Computing, Computing with Business Management, Business IT, HND or equivalent qualifications.

Delivered online via the NCC Education virtual learning platform.



Intakes in March & September:

Email our admissions team for more information

admissions@nccedu.com

University of Central Lancashire BSc (Hons) Cyber Security and Networking

For students with the NCC Education Level 5 Diploma in Computing with Cyber Security, HND or equivalent qualifications

Delivered online via the NCC Education virtual learning platform.



Intakes in March & September:

Email our admissions team for more information

admissions@nccedu.com



University of Greenwich BSc (Hons) Computing with specialisations in Network Systems & Information Systems

For students with the NCC Education Level 5 Diploma in Computing, Computing with Business Management, Business IT, HND or equivalent qualifications.

Delivered in a classroom environment via selected Accredited Partner Centres.



Intakes in January & September:

Please contact your nearest Accredited Partner Centre for details of how to apply, all centres can be found on the NCC Education website

www.nccedu.com

Contents

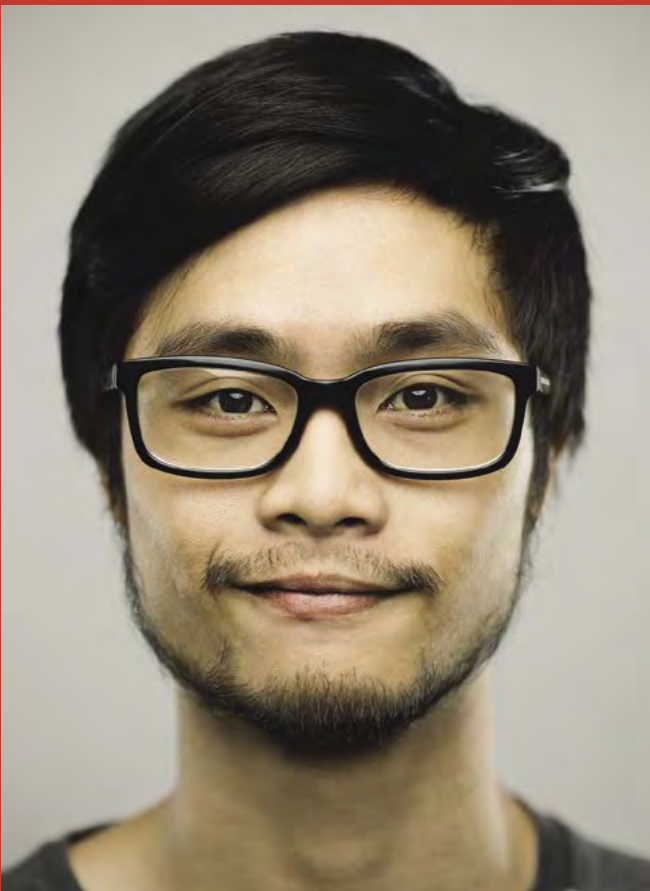
Abertay University	3	Staffordshire University	74
Aberystwyth University	3	Study Group Coventry University	74
ACCA (Association of Chartered Certified Accountants)	4	Study Group University of Aberdeen	75
Arts University Bournemouth	6	Study Group University of Huddersfield	75
Aston University	7	Study Group University of Lincoln	75
Bangor University - <i>Guaranteed</i>	9	Study Group University of Sussex	76
Berkeley College	9	Swansea University	76
Birmingham City University - <i>Guaranteed</i>	11	Swinburne University of Technology	77
British University Vietnam	13	Teesside University	77
Canterbury Christ Church University	14	Temple University	80
Carroll University - <i>Guaranteed</i>	17	Temple University Japan Campus (TUJ)	81
CQUniversity Australia - <i>Guaranteed</i>	19	The University of Queensland	82
Curtin University	19	Thompson Rivers University	82
Curtin University UAE	22	Turin Polytechnic University in Tashkent	84
Curtin University Malaysia	22	University Canada West	84
Curtin University Mauritius	23	University Centre Croydon	85
Curtin University Singapore	23	University for the Creative Arts	85
De Montfort University Leicester	24	University of Bedfordshire	86
Eastern Connecticut State University	25	University of Canberra	88
Fraser International College	27	University of Central Lancashire	91
Glasgow Caledonian University	27	University of Derby	94
Grenoble Ecole de Management	28	University of East London	96
Heidelberg University	28	University of Essex	99
INTO Glasgow Caledonian University	29	University of Exeter	101
INTO Newcastle University	29	University of Gloucestershire	101
INTO Queens University Belfast	29	University of Greenwich	102
INTO University of East Anglia	30	University of Idaho	103
IUBH International University of Applied Sciences	30	University of Leeds	104
James Cook University Singapore	32	University of Leicester	104
Keele University	33	University of Liverpool	107
Kingston University London	36	University of London (International)	108
La Trobe University	37	University of Nicosia Medical School	108
Lakehead University	38	- <i>Guaranteed*</i>	108
Leeds Beckett University	42	University of North Alabama	109
Limerick Institute of Technology - <i>Guaranteed</i>	46	University of Northampton	110
Liverpool Hope University - <i>Guaranteed</i>	48	University of Nottingham	110
Liverpool John Moores University	49	University of Nottingham Malaysia	111
London Metropolitan University	49	University of Plymouth	113
Manchester Metropolitan University	51	University of South Wales	114
Massey University	55	University of Strathclyde	115
Media Design School	57	University of Sunderland	116
Nagoya University of Commerce and Business	57	University of Sunderland Hong Kong	117
National College of Ireland - <i>Guaranteed</i>	57	University of Sussex	117
Northumbria University	58	University of the West of England (UWE Bristol)	118
Northwood University	58	University of Westminster	119
Nottingham Trent University	60	University of Worcester	120
Oxford Brookes University	62	University of York	120
Royal Holloway, University of London	69	Victoria University of Wellington	124
Sheffield Hallam University	71	Westminster International University in Tashkent	127
SIM Global Education, Singapore Institute of Management	72	XJTLU Xi'an Jiaotong-Liverpool University	127
Southern Cross University	72	York University	128

* Students who meet minimum entry requirements will receive a guaranteed interview

Approved
by the UK Home Office
for Visa &
Immigration purposes

LanguageCert
SELT

Study
in the UK



Fast. Easy exam booking up to 24 hours before the exam. Many exam locations and slots. Fast results.

Reliable. Fair testing of real-life language skills at the specific level required for a visa.

Friendly. Speaking is a conversation with a real person online. Free preparation materials and webinars. Customer service 24/7/365.

self.languagecert.org



5% off

promo code:

CCC2CE

I took the Engineering pathway in NCC Education's Level 3 Foundation Diploma and am now studying Aerospace Engineering at Swansea University. I really enjoyed my time studying L3IFDHES at WE Bridge Academy. The staff there are supportive, and the quality of teaching is excellent.

**Abdulmageed
Alshahrany**

- Level 3 International Foundation Diploma for Higher Education Studies
- Aerospace Engineering student at Swansea University



L3IFDHES*

Abertay University Scotland

www.abertay.ac.uk
admissions@abertay.ac.uk

L3IFDHES	Entry Requirements	Year 1 Entry to
Business	IELTS 6.0 (no band less than 5.5) Overall average of 40% (Pass)	<ul style="list-style-type: none"> BA (Hons) Business Management BA (Hons) Accounting and Finance BA (Hons) Marketing and Business
Computing	IELTS 6.0 (no band less than 5.5) Overall average of 40% (Pass)	<ul style="list-style-type: none"> BSc (Hons) Computing

Aberystwyth University Wales

www.aber.ac.uk
international@aber.ac.uk

L3IFDHES	Entry Requirements	Year 1 Entry to
Business	IELTS 6.0 (no band less than 5.5) Overall average of 40% (Pass)	<ul style="list-style-type: none"> BSc Hons Accounting and Finance BSc Hons Business Finance BSc Hons Adventure Tourism Management BSc Hons Business Economics BSc Hons Business and Management BSc Hons Tourism Management BSc Hons Marketing BSc Hons Economics
Computing	IELTS 6.0 (no band less than 5.5) Overall average of 40% (Pass) MERIT in Foundation Mathematics	<ul style="list-style-type: none"> BSc Hons Computer Science and Artificial Intelligence (with integrated year in industry) BSc Hons Computer Science and Artificial Intelligence BSc Hons Artificial Intelligence and Robotics BSc Hons Artificial Intelligence and Robotics (with integrated year in industry) BSc Hons Computer Graphics, Vision and Games (with integrated year in industry) BSc Hons Computer Graphics, Vision and Games BSc Hons Business Information Technology BSc Hons Business Information Technology (with integrated year in industry) BEng Software Engineering (with integrated year in industry)

*LEVEL 3 INTERNATIONAL FOUNDATION DIPLOMA FOR HIGHER EDUCATION STUDIES



Excellence in teaching since 1872

We offer a wide range of academic courses at undergraduate, postgraduate and MBA level. Search for yours today at courses.aber.ac.uk

- Agriculture
- Business & Management
- International Politics
- Biological Sciences
- Computer Science
- Psychology
- Law & Criminology
- English & Creative Writing
- Theatre, Film & Television Studies

International Accommodation Scholarship

Your housing, every year, at no extra cost.

#1 in UK for Teaching Quality

(The Times & The Sunday Times, Good University Guide 2021; TEF Gold Award)

#1 in UK for Student Satisfaction

(The Times & The Sunday Times, Good University Guide 2021)

Beautiful, Safe & Cultural Location

West coast of the UK, surrounded by sea, mountains and steeped in history

Contact us:



aber.ac.uk/international



international@aber.ac.uk



[@aberinternational](https://www.facebook.com/aberinternational)



[@aberinternational](https://www.instagram.com/aberinternational)

Aberystwyth University

Wales

www.aber.ac.uk
international@aber.ac.uk

L3IFDHES	Entry Requirements	Year 1 Entry to
Computing	IELTS 6.0 (no band less than 5.5) Overall average of 40% (Pass) MERIT in Further Mathematics and a pass in at least one science subject	<ul style="list-style-type: none"> MEng Software Engineering (with integrated year in industry)
Engineering	IELTS 6.0 (no band less than 5.5) Overall average of 40% (Pass) MERIT in Further Mathematics and a pass in at least one science subject	<ul style="list-style-type: none"> BEng Robotics and Embedded-Systems Engineering BEng Robotics and Embedded-Systems Engineering (with integrated year in industry) MEng Robotics and Embedded-Systems Engineering MEng Robotics and Embedded-Systems Engineering (with integrated year in industry) BSc Data Science BSc Data Science (with integrated year in industry)

ACCA (Association of Chartered Certified Accountants)

Worldwide

www.accaglobal.com
yourfuture.accaglobal.com/global/en/contact.html

L3IFDHES	Entry Requirements	Year 1 Entry to
Business	Minimum 40% overall	<ul style="list-style-type: none"> ACCA Qualification

We are the UK's NO.1 specialist

university for employability*

ARTS
UNIVERSITY
BOURNEMOUTH

TEF Gold

ART

PERFORMANCE

MEDIA

DESIGN

JOIN OUR CREATIVE COMMUNITY

aub.ac.uk

+44 (0) 1202 363 233

international@aub.ac.uk

* The 2017 TEF Metrics ranking compiled by Times Higher Education.

Arts University Bournemouth England

www.aub.ac.uk
international@aub.ac.uk

L3IFDHES	Entry Requirements	Foundation Diplomas and Year 1 Entry to
All streams	<p>Minimum Merit.</p> <ul style="list-style-type: none"> Portfolio guidelines for Foundation Diploma in Art and Design www.aub.ac.uk/portfolios IELTS 5.5 (no individual band less than 5.0) Portfolio guidelines for Foundation Diploma in Art and Design (Media) www.aub.ac.uk/portfolios IELTS 5.5 (no individual band less than 5.0) International Foundation Diploma: www.aub.ac.uk/portfolios IELTS 5.0 (no individual band less than 4.5) - 'integrated programme of English language & Academic Study Skills' BA (Hons) Courses: IELTS 6.0 (no individual band less than 5.5) <p>Progression to a degree course is guaranteed after successfully passing the Foundation course</p>	<ul style="list-style-type: none"> <input type="checkbox"/> Foundation Diploma in Art and Design - September-May <input type="checkbox"/> Foundation Diploma in Art and Design (Media) - September-May <input type="checkbox"/> International Foundation Diploma - January-June <input type="checkbox"/> BA (Hons) courses - September-May <ul style="list-style-type: none"> BA (Hons) Acting BA (Hons) Animation Production BA (Hons) Art and Design History BA (Hons) Architecture (ARB / RIBA PART 1) BA (Hons) Commercial Photography BA (Hons) Costume BA (Hons) Creative Events Management BA (Hons) Creative Writing BA (Hons) Dance BA (Hons) Design BA (Hons) Fashion BA (Hons) Fashion Branding and Communication BA (Hons) Film Production BA (Hons) Fine Art BA (Hons) Graphic Design BA (Hons) Illustration BA (Hons) Interior Architecture and Design BA (Hons) Make-up for Media and Performance BA (Hons) Modelmaking BA (Hons) Performance Design and Film Costume BA (Hons) Photography BA (Hons) Textiles BA (Hons) Visual Communication BA (Hons) Visual Effects (VFX) for Film and Television

Aston University England

www.aston.ac.uk
international@aston.ac.uk

L3IFDHES	Entry Requirements	Year 1 Entry to
Business	<p>IELTS 6.5 (no band less than 5.5)</p> <p>Overall average of 70%</p>	<ul style="list-style-type: none"> BSc (Hons) Logistics with Purchasing Management BSc (Hons) Logistics with Supply Chain Management
	<p>IELTS 6.5</p> <p>Overall average of 70%</p>	<ul style="list-style-type: none"> BSc (Hons) Accounting and Finance BSc (Hons) Business Analytics BSc (Hons) Business and International Relations BSc (Hons) Business and Management BSc (Hons) Business and Politics BSc (Hons) Business Computing and IT BSc (Hons) Business Enterprise Development BSc (Hons) Business, Management and Public Policy BSc (Hons) Economics and Management BSc (Hons) Economics BSc (Hons) Finance BSc (Hons) Human Resources and Business Management BSc (Hons) International Business and Economics BSc (Hons) International Business and Management Law LLB BSc (Hons) Marketing BSc (Hons) Psychology and Business BSc (Hons) Psychology and Marketing
Computing	<p>IELTS 6.0 (no band less than 5.5)</p> <p>Overall average of 70%</p>	<ul style="list-style-type: none"> BSc (Hons) Computer Science with Multimedia BSc (Hons) Computer Science with Business

Why Bangor?

A World-Class
Learning Environment

5 Stars
Overall Excellent Rating
(QS Star Rating System 2022)

Top 5
in the UK
for Lecturers &
Teaching Quality
(WhatUni 2022)

Top 5
in the UK
for University of the Year
(WhatUni 2022)

Top 10
in the UK
for Accounting & Finance
(Guardian University Guide 2023)



Guaranteed Progression for NCC Education Students

Scholarships up to £10,000 available

Eligibility:

Overall average of 50% in IFD, and IELTS 6.0 (5.5)

T: +44 (0) 1248 250 008
@ bangorinternational

E: international@bangor.ac.uk
BangorUni_intl

www.bangor.ac.uk/international
BangorUniversityInternational

Bangor University Wales

GUARANTEED
www.bangor.ac.uk
international@bangor.ac.uk

L3IFDHES	Entry Requirements	Year 1 Entry to
Business	IELTS 6.0 with no single element below 5.5 Pass with 50% overall	<ul style="list-style-type: none"> BSc (Hons) Accounting and Finance BSc (Hons) Accounting and Management BSc (Hons) Banking and Finance BSc (Hons) Business Management BSc (Hons) Economics BSc (Hons) Economics with Finance BSc (Hons) Management with Human Resource Management BSc (Hons) Marketing

Berkeley College USA

www.berkeleycollege.edu
international@berkeleycollege.edu

L3IFDHES	Entry Requirements	Year 1 Entry to
Business	<p>IELTS 5.5 Overall</p> <p>Overall Average of 40% Pass</p> <p>The following subjects have been recognised for credit transfer from general education subjects in the first year:</p> <p><i>Culture Studies</i> equivalency to HUM271 Credit Points 3.0</p> <p><i>Introduction to Computer Science</i> equivalency to CIS115 Credit Points 3.0</p> <p><i>Introduction to Business</i> equivalency to BUS100 Credit Points 4.0</p> <p><i>Introduction to Accounting and Economics</i> equivalency to BUS271 Credit Points 3.0</p>	<ul style="list-style-type: none"> Accounting Fashion Merchandising and Management Financial Services General Business Health Services Administration / Management International Business Management Marketing Communications Graphic Design Interior Design Justice Studies - Criminal Justice Legal Studies

OUR COURSES

Accounting & Finance
Architecture
ACCA
Art & Design
Biomedical Sciences
Building Surveying
Business

Big Data Analytics
Civil Engineering
Computer Science
Construction
Criminology
Data Journalism
Education

Fashion Promotion
Food & Nutrition
Gemmology
Health
Human Resource
International Law

WHY STUDY WITH US?

7TH IN THE UK FOR EMPLOYABILITY.

*Destinations of Leavers from Higher Education (DLHE) survey 16/17.

Contact Us

T: +44 (0) 121 331 5389

E: international.enquiries@bcu.ac.uk

www.bcu.ac.uk/your-country

Berkeley College USA

www.berkeleycollege.edu
international@berkeleycollege.edu

L3IFDHES	Entry Requirements	Year 1 Entry to
Computing	<p>IELTS 5.5 Overall</p> <p>Overall Average of 40% Pass</p> <p>The following subjects have been recognised for credit transfer from general education subjects in the first year:</p> <p><i>Culture Studies</i> equivalency to HUM271, Credit Points 3.0</p> <p><i>Introduction to Computing</i> equivalency to CIS115, Credit Points 3.0</p> <p><i>Introduction to Business</i> equivalency to BUS100, Credit Points 4.0</p> <p><i>Introduction to Economics</i> equivalency to BUS271, Credit Points 3.0</p>	<ul style="list-style-type: none"> Information Technology Management

Birmingham City University England

GUARANTEED

www.bcu.ac.uk
international.enquiries@bcu.ac.uk

L3IFDHES	Entry Requirements	Year 1 Entry to
Business	<p>IELTS 6.0 (no band less than 5.5)</p> <p>Overall average of 50% with no less than 40% in any module</p>	<ul style="list-style-type: none"> BA (Hons) Accountancy BA (Hons) Accounting and Finance BA (Hons) Business BA (Hons) Marketing BA (Hons) Marketing, Advertising and Public Relations BA (Hons) Business Economics BA (Hons) Human Resource Management BA (Hons) Business Management BA (Hons) Business (Marketing) BA (Hons) Financial Economics

EDUCATION IS A JOURNEY



DISCOVER YOUR CAREER PATH WITH BRITISH UNIVERSITY VIETNAM

BRITISH QUALIFICATIONS
that are internationally recognised

100% OF GRADUATES
in employment or further study

INTERNATIONAL FACULTY
with qualifications and experience
from prestigious universities and
corporations throughout the world

**NEW STATE-OF-THE-ART
CAMPUS**
indicative of 4IR with embedded
learning technology situated in a
dynamic and spacious eco-urban
complex

SUSTAINABLE PARTNERSHIPS
with leading educational and
business organisations for exchange
programmes & internships

Birmingham City University England

GUARANTEED

www.bcu.ac.uk
international.enquiries@bcu.ac.uk

L3IFDHES	Entry Requirements	Year 1 Entry to
Computing	<p>IELTS 6.0 (no band less than 5.5)</p> <p>Overall average of 50% with no less than 40% in any module</p> <p>Minimum score of 50% in Foundation Mathematics module</p>	<ul style="list-style-type: none"> BSc (Hons) Business Information Technology BSc (Hons) Computer Games Technology BSc (Hons) Computer Networks BSc (Hons) Computer Networks and Security BSc (Hons) Computer Science BSc (Hons) Digital Broadcast Technology BSc (Hons) Digital Media Technology BSc (Hons) Computer Forensics
Engineering	<p>IELTS 6.0 (no band less than 5.5)</p> <p>Overall average of 50% with no less than 40% in any module</p> <p>Minimum score of 60% Merit in Foundation Maths</p>	<ul style="list-style-type: none"> BEng (Hons) Automotive Engineering BEng (Hons) Mechanical Engineering BEng (Hons) Electronic Engineering

British University Vietnam Vietnam

www.buv.edu.vn/
info@buv.edu.vn

L3IFDHES	Entry Requirements	Year 1 Entry to
Any / relevant to study area	<p>Standard Staffordshire University English language requirements apply: https://www.staffs.ac.uk/international/your-application-journey/english-language-requirements</p> <p>All applications will be considered on a case-by-case basis only</p>	<p>Awarded by Staffordshire University at BUV:</p> <ul style="list-style-type: none"> BA (Hons) Contemporary Creative Practice
Business; Finance	<p>Standard Staffordshire University English language requirements apply: https://www.staffs.ac.uk/international/your-application-journey/english-language-requirements</p> <p>All applications will be considered on a case-by-case basis only</p>	<p>Awarded by Staffordshire University at BUV:</p> <ul style="list-style-type: none"> BSc (Hons) International Business Management BA (Hons) Marketing Management BA (Hons) Accounting & Finance BA (Hons) Tourism Management BA (Hons) Events Management

Contact us to find out more:

www.buv.edu.vn | info@buv.edu.vn | [British University Vietnam](#) | [+84 \(221\) 6 250 250](tel:+842216250250)

British University Vietnam Vietnam

www.buv.edu.vn/
info@buv.edu.vn

L3IFDHES	Entry Requirements	Year 1 Entry to
Computing	<p>Standard Staffordshire University English language requirements apply: https://www.staffs.ac.uk/international/your-application-journey/english-language-requirements</p> <p>All applications will be considered on a case-by-case basis only</p>	<p>Awarded by Staffordshire University at BUV:</p> <ul style="list-style-type: none"> BSc (Hons) Computer Games Design and Programming BSc (Hons) Computer Science: Cyber Security / Cloud Technologies

Canterbury Christ Church University England

www.canterbury.ac.uk
courses@canterbury.ac.uk

L3IFDHES	Entry Requirements	Year 1 Entry to
Any / relevant to study area	<p>IELTS 6.0 overall with 6.0 in writing and no less than 5.5 in any of the remaining components</p> <p>Health Science programmes may have higher English language requirements.</p> <p>Please check each course page on the university website for further information</p>	<ul style="list-style-type: none"> BSc Accounting BSc Accounting and Finance BSc Adult Nursing BA / BSc Advertising BSc Animal Science BA / BSc Applied Criminology BSc Biochemistry and Biological Chemistry BSc Biology BEng Biomedical Engineering MEng Biomedical Engineering BSc Biomedical Science MSci Biomedical Science BSc Biomolecular Science BSc Business Information Systems BSc Business Management BSc Business Studies BEng Chemical Engineering MEng Chemical Engineering BSc Child Nursing BSc Computer Forensics and Security BSc Computer Science BSc Computing BA Counselling, Coaching and Mentoring BA Digital Media BA Early Childhood Studies BSc Ecology

Canterbury Christ Church University England

www.canterbury.ac.uk
courses@canterbury.ac.uk

L3IFDHES	Entry Requirements	Year 1 Entry to
Any / relevant to study area	<p>IELTS 6.0 overall with 6.0 in writing and no less than 5.5 in any of the remaining components' to 'IELTS 6.0 overall with 6.0 in writing and no less than 5.5 in any of the remaining components.</p> <p>Health Science programmes may have higher English language requirements.</p> <p>Please check each course page on the university website for further information</p>	<ul style="list-style-type: none"> BA Education and Professional Training BA Education Studies BSc Events Management BA Events Planning (with another subject) BA Film Production BA Film, Radio and Television BSc Finance BSc Forensic Investigation BA Games Design BSc Healthcare Practice BSc Hospitality Management BSc Human Biology BSc Human Resource Management BSc International Business Management BSc International Relations LL.B. Law LL.B. Law with Criminology LL.B. Law with Business LL.B. Law with Finance LL.B. Law with International Relations LL.B. Law with Politics LL.B. Law with Sociology BSc Logistics Management BSc Marketing BEng Mechanical Engineering BA Media and Communications BSc Mental Health Nursing BSc Midwifery BA Multimedia Journalism BSc Occupational Therapy BSc Paramedic Science BSc Physical Education and Sport & Exercise Science BSc Physiotherapy BSc Plant Science BSc Psychology BSc Public Health and Health Promotion BA Public Relations and Media BA Social Work BA / BSc Sociology BSc Sociology and Social Policy BEng Software Engineering BSc Sport and Exercise Psychology BSc Sport and Exercise Science BSc Sports Therapy and Rehabilitation BSc Tourism Management BA / BSc Tourism Studies

Carroll University | Waukesha, Wisconsin

BENYAPA KHOWPINITCHAI '20

Major: Biology | Minors: Art, Mathematics and Biochemistry

"I have engaged in both internal and external **research opportunities** throughout my time at Carroll. I have worked on multiple research **projects with biology faculty**. Additionally, I have also **interned at various external research institutions**, including the Medical College of Wisconsin and the Harvard University Stem Cell Institute. From my experience conducting research studies off-campus, I learned that despite coming from a small liberal arts college, **I have been sufficiently prepared to carry out a well-designed research project and produce reliable findings like those from prestigious universities**. Thanks to the **International Scholarship** I have received from Carroll every year, I can **engage in this unique and amazing college experience**."

Be a Pioneer. Discover Carroll University at carrollu.edu

Carroll University USA

GUARANTEED

www.carrollu.edu
international@carrollu.edu

L3IFDHES	Entry Requirements	Year 1 Entry to
Any / relevant to study area	<p>IELTS 6.0 Overall</p> <p>Equivalent of a "C" or above (42-53%)</p> <p>The following subjects have been recognised for credit transfer from general education requirements in year 1:</p> <p>Cultural Studies Foundation Mathematics Introduction to Programming Introduction to Computing Introduction to Business Introduction to Accounting and Economics</p>	<ul style="list-style-type: none"> • Animal Behavior • Art • Biochemistry • Biology • Chemistry • Communication • Criminal Justice • Educational Studies • Elementary Education • Elementary Education and Special Education • Dual Certification • Environmental Science • Exercise Science • Finance • Freshwater Sciences • Global Studies • Graphic Communication • Health Care Administration • Health Sciences • Information Technology • Management and Leadership • Marine Sciences • Marketing • Psychology • Sociology • Sports and Recreation Administration
Business	<p>IELTS 6.0 Overall</p> <p>Equivalent of a "C" or above (42-53%)</p> <p>The following subjects have been recognised for credit transfer from general education requirements in year 1:</p> <p>Cultural Studies Foundation Mathematics Introduction to Programming Introduction to Computing Introduction to Business Introduction to Accounting and Economics</p>	<ul style="list-style-type: none"> • Accounting • Actuarial Sciences • Business Administration • Business Economics

Carroll University USA

GUARANTEED
www.carrollu.edu
info@carrollu.edu

L3IFDHES	Entry Requirements	Year 1 Entry to
Computing	<p>IELTS 6.0 Overall</p> <p>Equivalent of a "C" or above (42-53%)</p> <p>The following subjects have been recognised for credit transfer from general education requirements in year 1:</p> <p>Cultural Studies Foundation Mathematics Introduction to Programming Introduction to Computing Introduction to Business Introduction to Accounting and Economics</p>	<ul style="list-style-type: none"> Computer Science
Engineering	<p>IELTS 6.0 Overall</p> <p>Equivalent of a "C" or above (42-53%)</p> <p>The following subjects have been recognised for credit transfer from general education requirements in year 1:</p> <p>Cultural Studies Foundation Mathematics Introduction to Programming Introduction to Computing Introduction to Business Introduction to Accounting and Economics</p>	<ul style="list-style-type: none"> Applied Physics Applied Physics and Engineering Dual Degree

CQUniversity Australia Australia

GUARANTEED
www.cqu.edu.au
cqu.edu.au/international-students/enquire-and-apply/enquire

L3IFDHES	Entry Requirements	Year 1 Entry to
Business	<p>IELTS 6.0 (no band less than 5.5)</p> <p>Overall average of 55% and above</p>	<ul style="list-style-type: none"> Bachelor of Business Bachelor of Accounting Bachelor of Professional Communication Bachelor of Hospitality Management
Computing	<p>IELTS 6.0 (no band less than 5.5)</p> <p>Overall average of 55% and above</p>	<ul style="list-style-type: none"> Bachelor of Information Technology Bachelor of Digital Media

Curtin University Australia

www.curtin.edu.au
study@curtin.edu.au

L3IFDHES	Entry Requirements	Year 1 Entry to
Any / relevant to study area	<p>Please see: https://study.curtin.edu.au/applying/english-language-requirements</p> <p>Successful completion of the NCC Education Level 3 International Foundation Diploma for Higher Education Studies (L3IFDHES). Applications will be considered on a case by case basis.</p>	<p>Bachelor of Commerce - Majors include:</p> <ul style="list-style-type: none"> Accounting Accounting Technologies Advertising Banking Business Information Systems (Professional) Business Information Technology (Professional) Business Law Economics Entrepreneurship Event Management Finance Financial Planning Industrial Relations International Business Logistics and Supply Chain Management Management Marketing Professional Human Resource Management Property Property Development Valuation Public Relations Taxation Tourism and Hospitality Bachelor of Business Administration Bachelor of Information Technology

Jingjing Luo

L3IFDHES helped me to improve my English language skills and the core units in the Business stream were well-developed for my bachelor's study. Studying with NCC Education was a happy journey in my life that makes me feel confident in my future success.

- Completed the Level 3 International Foundation Diploma for Higher Education Studies
- Accepted to study Commerce at Curtin University Singapore



Curtin University Australia

www.curtin.edu.au
study@curtin.edu.au

L3IFDHES	Entry Requirements	Year 1 Entry to
Any / relevant to study area	<p>Please see: https://study.curtin.edu.au/applying/english-language-requirements</p> <p>Successful completion of the NCC Education Level 3 International Foundation Diploma for Higher Education Studies (L3IFDHES). Applications will be considered on a case by case basis.</p>	<p>Bachelor of Arts - Majors include:</p> <ul style="list-style-type: none"> • Anthropology and Sociology • Digital and Social Media • International Relations • Journalism <p>.....</p> <ul style="list-style-type: none"> • Bachelor of Psychology • Bachelor of Science (Nursing) • Bachelor of Science (Health Sciences) <p>.....</p> <p>Bachelor of Science (Science) - Some majors only. Majors include:</p> <ul style="list-style-type: none"> • Biochemistry • Chemistry • Coastal and Marine Science • Environmental Science • Extractive Metallurgy • Geophysics • Mine and Engineering Surveying • Mining • Multidisciplinary Science <p>.....</p> <ul style="list-style-type: none"> • Bachelor of Education (Early Childhood Education) • Bachelor of Education (Primary Education) • Bachelor of Educational Studies

Curtin University Dubai UAE

www.curtindubai.ac.ae
admissions@curtindubai.ac.ae

L3IFDHES	Entry Requirements	Year 1 Entry to
Any / relevant to study area	<p>Please see individual course pages on the Curtin University Dubai website for English language requirements.</p> <p>Successful completion of the NCC Education Level 3 International Foundation Diploma for Higher Education Studies (L3IFDHES). Applications will be considered on a case by case basis.</p>	<p>Bachelor of Commerce - Majors include:</p> <ul style="list-style-type: none"> International Business Finance Accounting Marketing Accounting and Finance <p>Bachelor of Business Administration - Majors include:</p> <ul style="list-style-type: none"> Human Resource Management Digital Marketing Small Business Startups Tourism and Hospitality <p>Bachelor of Communications (Web Media and Marketing)</p> <p>Bachelor of Information Technology</p>

Curtin University Malaysia Malaysia

www.curtin.edu.my
enquiries@curtin.edu.my

L3IFDHES	Entry Requirements	Year 1 Entry to
Any / relevant to study area	<p>Please see individual course pages on the Curtin University Malaysia website for English language requirements.</p> <p>Successful completion of the NCC Education Level 3 International Foundation Diploma for Higher Education Studies (L3IFDHES). Applications will be considered on a case by case basis.</p>	<p>Bachelor of Commerce - Majors include:</p> <ul style="list-style-type: none"> Accounting Finance Accounting and Entrepreneurship Accounting and Finance Banking and Finance Entrepreneurship and Marketing Finance and Management Finance and Marketing Human Resources Management and Management Management and Marketing Marketing and Public Relations Public Relations and Management Marketing and Tourism and Hospitality <p>Bachelor of Business Administration</p> <p>Bachelor of Communications - Streams include:</p> <ul style="list-style-type: none"> Corporate Screen Production Journalism Web Media Marketing Public Relations

Curtin University Mauritius Mauritius

www.curtinmauritius.ac.mu
study@curtinmauritius.ac.mu

L3IFDHES	Entry Requirements	Year 1 Entry to
Any / relevant to study area	<p>Please see individual course pages on the Curtin University Mauritius website for English language requirements.</p> <p>Successful completion of the NCC Education Level 3 International Foundation Diploma for Higher Education Studies (L3IFDHES). Applications will be considered on a case by case basis.</p>	<p>Bachelor of Commerce - Majors include:</p> <ul style="list-style-type: none"> Accounting and Finance Banking and Finance Business Information Systems Business Information Technology Business Information Technology and Systems Business Law Entrepreneurship Entrepreneurship and Marketing Logistics and Supply Chain Management Logistics, Supply Chain Management and Marketing Management and Human Resources Management Management and Marketing Management Marketing Tourism, Hospitality and Marketing <p>Bachelor of Information Technology</p> <p>Bachelor of Communications</p>

Curtin University Singapore Singapore

www.curtin.edu.sg
www.curtin.edu.sg/curtin-university/contact-us/

L3IFDHES	Entry Requirements	Year 1 Entry to
Any / relevant to study area	<p>Please see individual course pages on the Curtin University Singapore website for English language requirements.</p> <p>Successful completion of the NCC Education Level 3 International Foundation Diploma for Higher Education Studies (L3IFDHES). Applications will be considered on a case by case basis.</p>	<p>Bachelor of Commerce - Majors include:</p> <ul style="list-style-type: none"> Accounting Finance International Business Logistics and Supply Chain Management Management and Marketing

De Montfort University Leicester England

www.dmu.ac.uk
admissions@dmu.ac.uk

L3IFDHES	Entry Requirements	Year 1 Entry to
Business	<p>IELTS 6.0 with no less than 5.5 in any one language skill</p> <p>Successful completion with 60% (Merit level) overall with a pass in all modules</p>	<ul style="list-style-type: none"> BA (Hons) Business and Management BA (Hons) Business and Marketing BA (Hons) Business Management and HRM BA (Hons) International Business BA (Hons) Human Resource Management BA (Hons) Economics BSc (Hons) Economics BA (Hons) Business Management and Economics
Computing	<p>IELTS 6.0 with no less than 5.5 in any one language skill</p> <p>Successful completion with 60% (Merit level) overall with a pass in all modules</p>	<ul style="list-style-type: none"> BSc (Hons) Applied Computing BSc (Hons) Computer Science BSc (Hons) Cyber Security
Engineering	<p>IELTS 6.0 with no less than 5.5 in any one language skill</p> <p>Successful completion with 60% (Merit level) overall with a pass in all modules</p> <p>IELTS 6.5</p> <p>Successful completion with 60% (Merit level) overall with a pass in all modules</p>	<ul style="list-style-type: none"> BEng (Hons) Mechanical Engineering BEng (Hons) Electrical and Electronic Engineering BEng (Hons) Mechatronics BEng (Hons) Energy Engineering BEng (Hons) Aeronautical Engineering
Health Science	<p>IELTS 6.5</p> <p>Successful completion with 60% (Merit level) overall with a pass in all modules</p>	<ul style="list-style-type: none"> BSc (Hons) Biomedical Sciences BSc (Hons) Medical Science BSc (Hons) Health and Wellbeing in Society BSc (Hons) Nutrition BSc (Hons) Psychology BSc (Hons) Criminology BSc (Hons) Education Studies

Eastern Connecticut State University USA

www.easternct.edu
satsukd@easternct.edu

L3IFDHES	Entry Requirements	Year 1 Entry to
Any / relevant to study area	<p>IELTS 6.0 Overall</p> <p>Overall average of 40% (Pass) (CGPA 2.0) or higher</p> <p>The following subjects are accepted for credit transfer from general education subjects in the first year:</p> <p><i>Introduction to Business</i> credit transfer for ECSU Course BUS 230 Credit Points 3.0</p> <p><i>Culture Studies</i> credit transfer for ECSU course ANT 106 Credit Points 3.0</p> <p><i>Foundation Mathematics</i> credit transfer for ECSU course MAT 101 Credit Points 3.0</p> <p><i>Introduction to Computer Science</i> credit transfer for ECSU course CSC101</p> <p>NCC Education Graduates who meet the requirements, may be eligible for the Presidential Scholarship (\$6000 - \$9000) per academic year</p>	<ul style="list-style-type: none"> Biochemistry Biology Early Childhood Education Elementary Education English Environmental Earth Science Health Sciences History History and Social Sciences Labor Relations & Human Resource Management Music Philosophy Physical Education Psychology Social Work Sociology Spanish Theatre Women's and Gender Studies

Eastern Connecticut State University USA

www.easternct.edu
satsukd@easternct.edu

L3IFDHES	Entry Requirements	Year 1 Entry to
Business	<p>IELTS 6.0 Overall</p> <p>Overall average of 40% (Pass) (CGPA 2.0) or higher</p> <p>The following subjects are accepted for credit transfer from general education subjects in the first year:</p> <p><i>Introduction to Business</i> credit transfer for ECSU Course BUS 230 Credit Points 3.0</p> <p><i>Culture Studies</i> credit transfer for ECSU course ANT 106 Credit Points 3.0</p> <p><i>Foundation Mathematics</i> credit transfer for ECSU course MAT 101 Credit Points 3.0</p> <p><i>Introduction to Computer Science</i> credit transfer for ECSU course CSC101</p> <p>NCC Education Graduates who meet the requirements, may be eligible for the Presidential Scholarship (\$6000 - \$9000) per academic year</p>	<ul style="list-style-type: none"> Accounting Business Administration Communication Criminology Economics Finance Mathematics New Media Studies Political Science Sport and Leisure Management
Computing	<p>IELTS 6.0 Overall</p> <p>Overall average of 40% (Pass) (CGPA 2.0) or higher</p> <p>The following subjects are accepted for credit transfer from general education subjects in the first year:</p> <p><i>Introduction to Business</i> credit transfer for ECSU Course BUS 230 Credit Points 3.0</p> <p><i>Culture Studies</i> credit transfer for ECSU course ANT 106, Credit Points 3.0</p> <p><i>Foundation Mathematics</i> credit transfer for ECSU course MAT 101 Credit Points 3.0</p> <p><i>Introduction to Computer Science</i> credit transfer for ECSU course CSC101</p> <p>NCC Education Graduates who meet the requirements, may be eligible for the Presidential Scholarship (\$6000 - \$9000) per academic year</p>	<ul style="list-style-type: none"> Business Information Systems Computer Science

Fraser International College (Pathway to Simon Fraser University) Canada

www.fraseric.ca/admission-requirements

L3IFDHES	Entry Requirements	Year 1 Entry to
Business	<p>For English Language entry requirements, please see table: https://www.fraseric.ca/admission-requirements</p> <p>UTP II - Arts and Social Sciences / Business: Overall average of 75% in 4 academic subjects.</p>	<ul style="list-style-type: none"> Arts Social Sciences
Computing	<p>For English Language entry requirements, please see table: https://www.fraseric.ca/admission-requirements</p> <p>UTP II - Computing Science: Overall average of 75% in 4 academic subjects including Math at 75% + 1 science subject</p>	<ul style="list-style-type: none"> Computer Sciences

Glasgow Caledonian University Scotland

www.gcal.ac.uk
<https://www.gcu.ac.uk/study/internationalstudents/contactus/>

L3IFDHES	Entry Requirements	Year 1 Entry to
Business	<p>IELTS 6.0 (no band less than 5.5)</p> <p>Overall average of 40% (Pass)</p>	<ul style="list-style-type: none"> BA (Hons) Accountancy LLB (Hons) Law BA (Hons) Business Management BA (Hons) Finance Investment and Risk BA (Hons) International Business BA (Hons) International Business and Human Resource Management BA (Hons) International Business and Tourism Management BA (Hons) International Events Management BA (Hons) International Fashion Branding BA (Hons) International Fashion Business BA (Hons) International Marketing BA (Hons) Media and Communication BA (Hons) Multimedia Journalism BA (Hons) Risk Management BA (Hons) Social Sciences

Grenoble Ecole de Management France

www.grenoble-em.com
Bianca.hidalgo@grenoble-em.com

L3IFDHES	Entry Requirements	Year 1 Entry to
Business	<p>IELTS 6.5 with no less than 6.0 in each band</p> <p>Minimum overall L3IFDHES grade of Distinction and good grades in high school certificates, equivalent to a minimum of Merit.</p>	<ul style="list-style-type: none"> Bachelor in International Business (BIB)

Heidelberg University USA

www.heidelberg.edu
International@heidelberg.edu

L3IFDHES	Entry Requirements	Year 1 Entry to
Any / relevant to study area	<p>Must meet international admission requirements, contact the university for further details</p> <p>Overall average of 40% (Pass)</p>	<ul style="list-style-type: none"> Accounting Athletic Training Biochemistry Biology Business Administration Chemistry Communication Computer Science Criminology Economics Education English Environmental Science & Sustainability Health Sciences International Studies Philosophy Psychology Religion Self-Designed Studies Sport Management

INTO Glasgow Caledonian University Scotland

www.gcu.ac.uk
intogu@gcu.ac.uk

L3IFDHES	Entry Requirements	Year 1 Entry to
Business	<p>IELTS 5.5 (min 5.0 in writing)</p> <p>Overall average of 40% (Pass)</p>	<ul style="list-style-type: none"> International Diploma of Higher Education in Business, leading to year 3 (of a 4-year degree) within the Business School

INTO Newcastle University England

www.intostudy.com/en-gb/universities/newcastle-university
intonu@nu.ac.uk

L3IFDHES	Entry Requirements	Year 1 Entry to
Business	<p>IELTS 6.0 (no band less than 5.0)</p> <p>Overall average of 60% (or at least 60% in an academic subject and 40% in other subjects)</p>	<ul style="list-style-type: none"> International Diploma in Business leading to year 2 of a degree within the business school

INTO Queens University Belfast Northern Ireland

www.qub.ac.uk
intoqub@qub.ac.uk

L3IFDHES	Entry Requirements	Year 1 Entry to
Business	<p>IELTS 5.5 (no band less than 5.5)</p> <p>Overall average of 60% (Merit) (or at least 60% in an academic subject and pass in other subjects)</p>	<ul style="list-style-type: none"> International Diploma in Management and Finance, leading to year 2 of a degree within the business school

INTO University of East Anglia England

www.uea.ac.uk
intouea@uea.ac.uk

L3IFDHES	Entry Requirements	Year 1 Entry to
Business	IELTS 5.5 (no band less than 5.5) Overall average 60% (or at least 60% in an academic subject and 40% in other subjects)	<ul style="list-style-type: none"> International Diploma in Management and Economics, leading to year 2 of selected degrees within the School of Economics and Norwich Business School

IUBH International University of Applied Sciences Germany

www.iubh-university.de
admission@iubh.de

L3IFDHES	Entry Requirements	Year 1 Entry to
Any / relevant to study area	IELTS 6.0 Overall average of 40% (Pass)	<ul style="list-style-type: none"> BA International Management BA Aviation Management BA Hospitality Management BSc Computer Science BSc Business & IT BA Business Administration B.Eng. Industrial Engineering and Management

Enkh- Amgalan Erdenedalai

I really love that NCC Education's IFD programme has given me the opportunity to open up to people and be more confident. Besides that I learned many useful skills for studying at university such as time management, lecture, note taking and much more.

- Completed the Level 3 International Foundation Diploma for Higher Education Studies
- Progressed to a degree in Business Studies at James Cook University Singapore



James Cook University Singapore

www.jcu.edu.sg
admissions-singapore@jcu.edu.au

L3IFDHES	Entry Requirements	Year 1 Entry to
Any / relevant to study area	<p>English level equating with a minimum IELTS of 6.0</p> <p>Applications to be considered on a case-by-case basis</p>	<ul style="list-style-type: none"> • Bachelor of Arts (Majoring in Psychology Studies) • Bachelor of Business • Bachelor of Business (Majoring in Business Intelligence and Information Systems) • Bachelor of Business (Majoring in Hospitality and Tourism Management) • Bachelor of Business (Majoring in Human Resources Management) • Bachelor of Business (Majoring in International Business) • Bachelor of Business (Majoring in Management) • Bachelor of Business (Majoring in Marketing for the Digital Age) • Bachelor of Business and Environmental Science • Bachelor of Business and Environmental Science (Majoring in Aquaculture) • Bachelor of Commerce • Bachelor of Commerce (Majoring in Accounting) • Bachelor of Commerce (Majoring in Banking and Finance) • Bachelor of Commerce (Majoring in Economics) • Bachelor of Commerce (Majoring in Financial Management) • Bachelor of Commerce (Majoring in International Trade) • Bachelor of Cybersecurity • Bachelor of Economics • Bachelor of Education (Early Childhood Education) • Bachelor of Information Technology • Bachelor of Psychological Science • Bachelor of Psychological Science (Honours) • Bachelor of Science (Majoring in Aquaculture Science and Technology) • Bachelor of Science (Majoring in Data Science) • Bachelor of Science (Majoring in Internet of Things) • Bachelor of Tourism, Hospitality and Events

Keele University England

www.keele.ac.uk
international@keele.ac.uk

L3IFDHES	Entry Requirements	Year 1 Entry to
Business	<p>Overall 6.0 (no band less than 5.5)</p> <p>Overall 50% with no failed modules</p>	<ul style="list-style-type: none"> • Bachelor of Accounting, Finance and International Business • Bachelor of Accounting and Business Management • Bachelor of Accounting and Finance • Bachelor of Accounting and Marketing • Bachelor of Business and Human Resource Management • Bachelor of Management and Computer Science • Bachelor of Business Management and Economics • Bachelor of Business Management and Finance • Bachelor of International Business Management • Bachelor of Marketing and Business Management • Bachelor of Business Management and Economics • Bachelor of Economics • Bachelor of Economics and Finance • Bachelor of Economics and Politics • Bachelor of Accounting, Finance and International Business • Bachelor of International Business Management • Bachelor of Business and International Relations • Bachelor of International Business and Marketing • Bachelor of Management • Bachelor of Marketing and Media
Computing	<p>Overall 6.0 (no band less than 5.5)</p> <p>Overall 50% with no failed modules</p>	<ul style="list-style-type: none"> • Bachelor of Computer Science (SH) • Bachelor of Computer Science and Business Management • Bachelor of Computer Science and Geology • Bachelor of Computer Science and Music Technology

Discover the Keele difference

Get to know Keele

No.1
in England
for Student
Satisfaction
(public universities, 2018)



96%
Graduate
Employability
HESA 2017 – graduates in
work or further study within
six months of graduation



Scholarships
Keele International
Excellence
Scholarship
See website for details



**Guaranteed
Accommodation**
for international
students for all
years of study
(application deadline applies)



Subject Areas

- Accounting and Finance
- Astrophysics
- Biology, Biochemistry and Biomedical Sciences
- Business Management, Marketing and HRM
- Computer Science and Mathematics
- Education
- Environmental Sciences
- International Relations and Politics
- Law
- Media
- Medicine, Midwifery and Nursing
- Pharmacy, Physiotherapy and Radiography
- Psychology, Criminology and Forensic Science

and lots more

keele.ac.uk/study

Contact us to find out more T: +44(0)1782 733501 | E: International@keele.ac.uk

[f](#) [t](#) [@](#) [KeeleUniversity](#) | keele.ac.uk/international

[f](#) [KeeleInternational](#) | [@internationaloffice.keele](#)

Keele University England

www.keele.ac.uk
international@keele.ac.uk

L3IFDHES	Entry Requirements	Year 1 Entry to
Health Sciences	IELTS 6.5 (subtests 6.0) 60% overall with a science subject taken + guaranteed interview for NCC applicants	• BSc Radiography
	IELTS 6.5 (subtests 6.0) 50% average with a science subject taken	• BSc Rehabilitation & Exercise Science
	IELTS 7.0 (subtests 6.5) 60% overall with 60% in Biology + guaranteed interview for NCC applicants	• MSci Physiotherapy
	IELTS 7.0 (subtests 6.5) 75% overall with 70% in each component + Interview	• MPharm Pharmacy
	IELTS 7.0 (Reading, Listening and Speaking subtests 7.0, Writing subtest 6.5) 50% average with min 50% in maths module + Interview	• BSc Nursing (Adult Nursing) • BSc Nursing (Children's Nursing) • BSc Nursing (Mental Health) • BSc Nursing (Learning Disability)
Health Sciences + Any other stream	IELTS 7.0 (Reading, Listening and Speaking subtests 7.0, Writing subtest 6.5) 60% average with min 50% in maths module + Interview	• BSc Midwifery
	IELTS 7.0 (Reading, Listening and Speaking subtests 7.0, Writing subtest 6.5) 60% average with min 50% in maths module + Interview	• BSc Public Health

Kingston University London England

www.kingston.ac.uk
www.kingston.ac.uk/international/contact-us/

L3IFDHES	Entry Requirements	Year 1 Entry to
Business	IELTS 6.0 with a minimum of 5.5 in each of the four components Pass all 8 modules with an average score 70% (Distinction) including Merit in Foundation in Mathematics	<ul style="list-style-type: none"> BSc (Hons) Accounting & Finance with business experience
	IELTS 6.0 or equivalent Pass all 8 modules with an average score 60% (Merit) including Merit in Foundation in Mathematics	<ul style="list-style-type: none"> BSc (Hons) Business Management with business experience BSc (Hons) International Business with business experience BSc (Hons) Marketing & Advertising with business experience
Computing	IELTS 6.0 or equivalent Overall average of 40% (Pass)	<ul style="list-style-type: none"> BSc (Hons) Computer Science BSc (Hons) Computer Games Programming BSc (Hons) Cyber Security and Computer Forensics

La Trobe University Australia

www.latrobe.edu.au
www.latrobe.edu.au/international/international

L3IFDHES	Entry Requirements	Year 1 Entry to
Business, Higher Finance	IELTS requirements available on www.latrobe.edu.au See La Trobe University ATAR Requirement on www.latrobe.edu.au and use ATAR / NCC IFD Conversion Table.	<ul style="list-style-type: none"> Bachelor of Business (Accounting and Finance) Bachelor of Business (Sport Management)
	IELTS requirements available on www.latrobe.edu.au See La Trobe University ATAR Requirement on www.latrobe.edu.au . Use La Trobe University ATAR/ NCC IFD Conversion Table.	<ul style="list-style-type: none"> Bachelor of Accounting Bachelor of Business Bachelor of Business (Accounting) Bachelor of Business (Event Management) Bachelor of Business (Event Management/Marketing) Bachelor of Business (Human Resource Management) Bachelor of Business (Marketing) Bachelor of Business (Sport Development and Management) Bachelor of Business (Tourism and Hospitality) Bachelor of International Business Bachelor of Finance
Computing	IELTS requirements available on www.latrobe.edu.au See La Trobe University ATAR Requirement on www.latrobe.edu.au . Use La Trobe University ATAR/ NCC IFD Conversion Table.	<ul style="list-style-type: none"> Bachelor of Information Technology Bachelor of Business Information Systems Bachelor of Cybersecurity
Health Sciences, Chemical Engineering	IELTS requirements available on www.latrobe.edu.au See La Trobe University ATAR Requirement on www.latrobe.edu.au . Use La Trobe University ATAR/ NCC IFD Conversion Table.	<ul style="list-style-type: none"> Bachelor of Health Science Bachelor of Science

Lakehead University Canada

www.lakeheadu.ca/studentcentral/applying/english-language-proficiency-requirements

L3IFDHES	Entry Requirements	Year 1 Entry to
Any / relevant to study area	Specific course pre-requisite requirements and admission averages vary by program at Lakehead University. Program specific and general admission standards and language requirements are available at: https://www.lakeheadu.ca/studentcentral/applying/english-language-proficiency-requirements	<ul style="list-style-type: none"> • Aboriginal Education • Anthropology • Applied Life Sciences • Applied Life Sciences (Lakehead-Georgian Partnership) • Bioinformatics • Criminology • Economics • Education - Concurrent • Education - Consecutive • English • Environmental Management • Environmental Studies • Environmental Sustainability • Environmental Sustainability (Lakehead-Georgian Partnership) • Forestry (HBSCF) • General Arts • General Science • Geoarchaeology • Geography • Geology • Gerontology • History • Interdisciplinary Studies • Kinesiology • Lakehead Arts One • Lakehead Science One • Languages • Law • Medicine • Natural Resources Management • Natural Science • Outdoor Recreation, Parks & Tourism • Philosophy • Resource and Environmental Economics • Social Work • Sociology • Visual Arts • Water Resource Science • Women's Studies

Lakehead University Canada

www.lakeheadu.ca/studentcentral/applying/english-language-proficiency-requirements

L3IFDHES	Entry Requirements	Year 1 Entry to
Business	Specific course pre-requisite requirements and admission averages vary by program at Lakehead University. Program specific and general admission standards and language requirements are available at: https://www.lakeheadu.ca/studentcentral/applying/english-language-proficiency-requirements	<ul style="list-style-type: none"> • Business • Mathematics • Political Science
Chemical Engineering	Specific course pre-requisite requirements and admission averages vary by program at Lakehead University. Program specific and general admission standards and language requirements are available at: https://www.lakeheadu.ca/studentcentral/applying/english-language-proficiency-requirements	<ul style="list-style-type: none"> • Engineering - Chemical
Computing	Specific course pre-requisite requirements and admission averages vary by program at Lakehead University. Program specific and general admission standards and language requirements are available at: https://www.lakeheadu.ca/studentcentral/applying/english-language-proficiency-requirements	<ul style="list-style-type: none"> • Computer Science • Engineering - Software

Lakehead University Canada

www.lakeheadu.ca/studentcentral/applying/english-language-proficiency-requirements

L3IFDHES	Entry Requirements	Year 1 Entry to
Engineering	Specific course pre-requisite requirements and admission averages vary by program at Lakehead University. Program specific and general admission standards and language requirements are available at: https://www.lakeheadu.ca/studentcentral/applying/english-language-proficiency-requirements	<ul style="list-style-type: none"> • Engineering • Engineering - Civil • Engineering - Electrical • Engineering - Electrical (Lakehead-Georgian Partnership) • Engineering - Mechanical • Media, Film and Communications • Physics
Health Sciences	Specific course pre-requisite requirements and admission averages vary by program at Lakehead University. Program specific and general admission standards and language requirements are available at: https://www.lakeheadu.ca/studentcentral/applying/english-language-proficiency-requirements	<ul style="list-style-type: none"> • Biology • Chemistry • Music • Nursing • Psychology



**LEEDS
BECKETT
UNIVERSITY**
United Kingdom

KICK START YOUR FUTURE WITH LEEDS BECKETT

**International students can benefit
from 2 years of work experience in
the UK after graduating**



**5-star rating from
QS World University Rankings**

**International scholarships
up to £4000**

Placement opportunities available

Heritage dating back to 1824

leedsbeckett.ac.uk/international

Contact:
international@leedsbeckett.ac.uk



Leeds Beckett University England

www.leedsbeckett.ac.uk
internationaloffice@leedsbeckett.ac.uk

L3IFDHES	Entry Requirements	Year 1 Entry to
Any / relevant to study area	IELTS 6.0 or above, with no individual skill below 5.5 40% Pass	<ul style="list-style-type: none"> • BA (Hons) Architecture • BSc (Hons) Audio Engineering • BSc (Hons) Broadcast Media Technologies • BSc (Hons) Creative Media Technology • BSc (Hons) Digital Journalism • BA (Hons) Fashion • BA (Hons) Fashion Marketing • BA (Hons) Filmmaking • BSc (Hons) Games Design • BA (Hons) Graphic Design • BSc (Hons) Civil Engineering • BSc (Hons) Construction Management • BSc (Hons) Architectural Technology • MEng Building Services Engineering • BEng (Hons) Building Services Engineering • BEng (Hons) Electronic and Electrical Engineering • MEng Civil Engineering • BSc (Hons) Quantity Surveying • BSc (Hons) Building Surveying • MEng Robotics and Automation • BSc (Hons) Real Estate and Property Management • BSc (Hons) Project Management • BA (Hons) Journalism • BA (Hons) Digital Marketing • BA (Hons) Sports Journalism • BA (Hons) Economics and Finance • BA (Hons) Business Economics • BA (Hons) Business Studies • BA (Hons) Business Accounting with Finance • BA (Hons) Public Relations with Journalism • BA (Hons) International Business • BA (Hons) Marketing Management • BA (Hons) Marketing and Public Relations • BA (Hons) Business and Management • BA (Hons) Accounting and Finance

Leeds Beckett University England

www.leedsbeckett.ac.uk
internationaloffice@leedsbeckett.ac.uk

L3IFDHES	Entry Requirements	Year 1 Entry to
Any / relevant to study area	IELTS 6.0 or above, with no individual skill below 5.5 40% Pass	<ul style="list-style-type: none"> • BA (Hons) Business Management with Enterprise • BA (Hons) Business Management with Law • BA (Hons) Business Management with Leadership • BA (Hons) Business Management with Analytics • BA (Hons) Business Management with Finance • BA (Hons) Marketing with Advertising Management • BA (Hons) Business Management with Marketing • BA (Hons) Public Relations with Brand Communication • BSc (Hons) Human Resource Management and Business • BSc (Hons) Cyber Security • BSc (Hons) Data Science • MEng Computer Science • BEng (Hons) Robotics and Automation • MEng Cyber Security and Digital Forensics • BSc (Hons) Cyber Security and Digital Forensics • BSc (Hons) Computer Science • BSc (Hons) Digital Forensics • BSc (Hons) Occupational Therapy • BSc (Hons) Sports and Exercise Therapy • BSc (Hons) Nutrition • BSc (Hons) Physiotherapy • BSc (Hons) Dietetics • BSc (Hons) Environmental Health • BSc (Hons) Biomedical Sciences • BSc (Hons) Safety Health and Environmental Management • BA (Hons) Media and English • BA (Hons) Media Communication Cultures • BA (Hons) Early Years • BA (Hons) Educational Psychology • BA (Hons) Teaching and Education • BA (Hons) Childhood Studies • BA (Hons) Special Educational Needs, Disability and Inclusion • BA (Hons) Primary Education - Accelerated Degree • BA (Hons) Events Management • BA (Hons) International Tourism Management • BSc (Hons) Hospitality Business Management • BA (Hons) International Tourism Management with Marketing • BSc (Hons) Hospitality Business Management with Marketing • BA (Hons) Social Work • BSc (Hons) Health and Community Care • BSc (Hons) Health and Society

Leeds Beckett University England

www.leedsbeckett.ac.uk
internationaloffice@leedsbeckett.ac.uk

L3IFDHES	Entry Requirements	Year 1 Entry to
Any / relevant to study area	IELTS 6.0 or above, with no individual skill below 5.5 40% Pass	<ul style="list-style-type: none"> BSc (Hons) Adult Nursing BSc (Hons) Counselling and Mental Health BSc (Hons) Mental Health Nursing BSc (Hons) Social Care, Justice and Recovery BA (Hons) Childhood Development and Playwork BA (Hons) Youth Work and Community Development BA (Hons) Working with Children, Young People and Families LLB Bachelor of Laws LLB Law with Finance MLaw Law and Legal Practice LLB Law with Criminology LLB Law with International Business and Management BA (Hons) Sociology BA (Hons) Sociology and Criminology BA (Hons) Sociology and Psychological Studies BA (Hons) Social Psychology BA (Hons) Social Policy BA (Hons) Media Communication Cultures BA (Hons) History and Media BSc (Hons) Psychology BSc (Hons) Sports Coaching BA (Hons) Sports Marketing BA (Hons) Physical Education BA (Hons) Physical Education with Outdoor Education BSc (Hons) Sport and Exercise Science BSc (Hons) Science of Sport Performance BA (Hons) Sport Management BSc (Hons) Sport and Exercise Nutrition BA (Hons) Sport Development
Business	IELTS 6.0 (no band less than 5.5) Overall average of 40% (Pass)	<ul style="list-style-type: none"> BA (Hons) Accounting and Finance BA (Hons) Business Accounting with Finance BA (Hons) Business and Management BA (Hons) Business Management with Analytics BA (Hons) Business Management with Finance



Learn through doing

at Limerick Institute of Technology

LIT is one of the fastest growing colleges in the country offering a lively and enjoyable student experience.



More than **6,500 students** across 5 campuses in Limerick and Tipperary



Over **95% of graduates** in employment or further study



€32 Million Government investment in new state-of-the-art campuses



Limerick is a welcoming, affordable and safe city. Accommodation is up to **42% lower** than other Irish cities

Limerick Institute of Technology

Ireland

GUARANTEED
www.lit.ie
international@lit.ie

L3IFDHES	Entry Requirements	Year 1 Entry to
Business	IELTS 5.5 Overall Overall average of 50% or above	<ul style="list-style-type: none"> • BBs (Hons) Accounting & Finance • BBs (Hons) Enterprise & Innovation • BBs (Hons) Law & Taxation • BBs (Hons) Marketing & Management • BA (Hons) Business Studies with Sports Management • BA (Hons) Business Studies with Event Management • BA (Hons) Business Studies with Travel and Tourism Management • BA Culinary Arts • BA Hospitality Supervision
Computing	IELTS 5.5 Overall Overall average of 50% or above	<ul style="list-style-type: none"> • BSc (Hons) Computer Networks and Systems Management • BSc (Hons) Games Design and Development • BSc (Hons) Internet Systems Development • BSc (Hons) Software Development

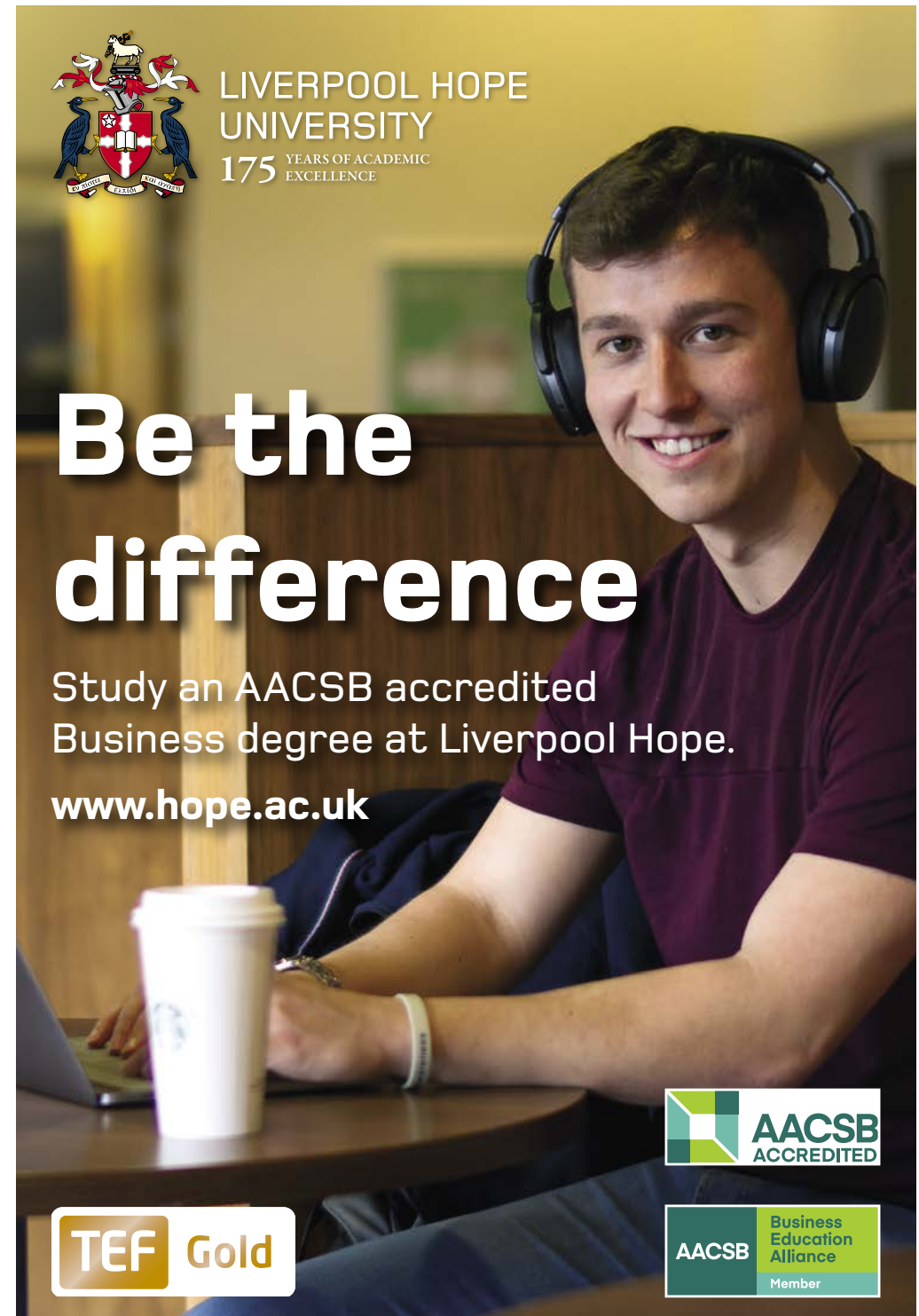


LIVERPOOL HOPE
UNIVERSITY
175 YEARS OF ACADEMIC
EXCELLENCE

Be the difference

Study an AACSB accredited
Business degree at Liverpool Hope.

www.hope.ac.uk



Liverpool Hope University England



L3IFDHES	Entry Requirements	Year 1 Entry to
Business	IELTS 6.0 (no band less than 5.5) Overall average of 50% or above	<ul style="list-style-type: none"> BA Business Management BA Business Management and International Relations BA Business Management and Law BA Business Management and Marketing BA Geography BA Geography and International Relations BA Geography and Politics BA Geography and Tourism BA International Relations and Law BA International Relations and Politics BA Law and Politics
	IELTS 6.0 (no band less than 5.5) Overall average of 50% plus minimum 45% in Foundation Mathematics	<ul style="list-style-type: none"> BA Accounting & Finance BA Accounting & Finance and Business Management BA Accounting & Finance and Politics BA Accounting & Finance and Tourism BSc Mathematics and Accounting & Finance BSc Mathematics and Business Management
Business or Computing	IELTS 6.0 (no band less than 5.5) Overall average of 50% plus a minimum of 45% in Foundation Mathematics	<ul style="list-style-type: none"> BA Accounting & Finance and Computer Science BA Accounting & Finance and Information Technology BA Business Management and Computer Science BA Business Management & Information Technology BA Information Technology & Marketing BSc Mathematics BSc Mathematics and Geography BSc Mathematics and Psychology
Computing	IELTS 6.0 (no band less than 5.5) Overall average of 50% plus a minimum of 45% in Foundation Mathematics	<ul style="list-style-type: none"> BA Computer Science & Law BA Computer Science & Psychology BA Information Technology & Law BA Information Technology & Geography

Liverpool John Moores University England

www.ljmu.ac.uk
international@ljmu.ac.uk

L3IFDHES	Entry Requirements	Year 1 Entry to
Business	IELTS 6.0 Overall average of 40% (Pass)	<ul style="list-style-type: none"> BSc (Hons) Accounting and Finance BA (Hons) Business Management BA (Hons) Business and Public Relations BA (Hons) Human Resource Management BA (Hons) Marketing
Computing	IELTS 6.0 Overall average of 40% (Pass)	<ul style="list-style-type: none"> BSc (Hons) Computer Studies

London Metropolitan University England

www.londonmet.ac.uk
international@londonmet.ac.uk

L3IFDHES	Entry Requirements	Year 1 Entry to
Business	Must have IELTS 6.0, English GCSE or equivalent Minimum 60% Merit grade in Business stream units (Introduction to Business, Introduction to Accounting and Finance)	<ul style="list-style-type: none"> BA (Hons) Business Management BA (Hons) International Business Management BA (Hons) Digital Business Management BA (Hons) Business Management and Human Resource Management BA (Hons) Airline, Airport and Aviation Management BA (Hons) Advertising, Marketing Communications and Public Relations BA (Hons) Marketing BA (Hons) Events Management BA (Hons) Tourism and Travel Management BA (Hons) Events Management and Marketing BA (Hons) Accounting and Finance BA (Hons) Music Business
Computing	Must have IELTS 6.0, English GCSE or equivalent Minimum 60% Merit grade in Computing stream units (Introduction to Computer Science and Introduction to Programming)	<ul style="list-style-type: none"> BSc (Hons) Computing
Finance	Must have IELTS 6.0, English GCSE or equivalent Minimum 60% Merit grade in Finance stream units (Further Mathematics, Introduction to Accounting and Finance)	<ul style="list-style-type: none"> BA (Hons) Accounting and Finance BSc (Hons) Banking and Finance BSc (Hons) Economics BSc (Hons) Economics and Finance

Join one of the UK's most popular universities*



**Times Higher Education Young
University Rankings 2019

OVER **3,500**
international students
from more than 140 countries

Study in a globally recognised
business school - part of an
elite group of schools worldwide
awarded with the prestigious
'Triple-crown' accreditation.



Guaranteed Progression routes for NCC Education Students[†]
[†]Subject to meeting entry requirements

Start your journey here: mmu.ac.uk/international

*7th most popular university by applications, according to UCAS application data 2018

Manchester Metropolitan University England

www.mmu.ac.uk
international@mmu.ac.uk

L3IFDHES	Entry Requirements	Year 1 Entry to
Relevant to study area	<p>IELTS 6.0 overall (min. 5.5 in each subcomponent) or equivalent</p> <p>Overall average of 50% and no less than 40% in any module; optional L3IFDHES/IFD modules must be appropriate to the chosen degree programme</p>	<ul style="list-style-type: none"> • BSc (Hons) Animal Behaviour • BSc (Hons) Animal Behaviour with Study in Europe, North America or Australia • BSc (Hons) Ecology and Conservation • BSc (Hons) Ecology and Conservation (sandwich) • BSc (Hons) Ecology and Conservation with study in North America or Australia • BSc (Hons) Environmental Management and Sustainability (sandwich) • BSc (Hons) Environmental Science • BSc (Hons) Environmental Science (sandwich) • BSc (Hons) Geography • BSc (Hons) Geography (sandwich) • BSc (Hons) Geography with study abroad • BSc (Hons) Manchester City Community Football Coaching • BSc (Hons) Physical Geography • BSc (Hons) Physical Geography (sandwich) • BSc (Hons) Physical Geography with study in North America or Australia • BSc (Hons) Wildlife Biology • BSc (Hons) Wildlife Biology with Study in Europe, North America or Australia • BSc (Hons) Zoology

Manchester Metropolitan University England

www.mmu.ac.uk
international@mmu.ac.uk

L3IFDHES	Entry Requirements	Year 1 Entry to
Business	<p>IELTS 6.0 overall (min. 5.5 in each subcomponent) or equivalent</p> <p>Overall average of 50% and no less than 40% in any module; optional L3IFDHES/IFD modules must be appropriate to the chosen degree programme</p>	<ul style="list-style-type: none"> BA (Hons) Accounting and Finance BA (Hons) Accounting and Finance (sandwich) BA (Hons) Accounting and Finance (with overseas study) BA (Hons) Advertising and Brand Management BA (Hons) Advertising and Brand Management (sandwich) BA (Hons) Advertising and Brand Management (with overseas study) BA (Hons) Banking and Finance BA (Hons) Banking and Finance (with overseas study) BA (Hons) Banking and Finance (with placement) BA (Hons) Business Enterprise / Human Resource Management BA (Hons) Business Enterprise / Human Resource Management (with overseas study) BA (Hons) Business Enterprise / Human Resource Management (with placement) BA (Hons) Business Enterprise / Marketing (with overseas study) BA (Hons) Business Enterprise / Marketing (with placement) BA (Hons) Business Management BA (Hons) Business Management (4 years) BA (Hons) Business Management (sandwich) BA (Hons) Business Management with Law BA (Hons) Business Management with Law (with overseas study) BA (Hons) Business Management with Law (with placement) BA (Hons) Business Technology BA (Hons) Business Technology (with overseas study) BA (Hons) Business Technology (with placement) BA (Hons) Business with German BA (Hons) Business with Italian BA (Hons) Business with Japanese BA (Hons) Business with Mandarin Chinese BA (Hons) Business with Modern Standard Arabic BA (Hons) Business with Spanish BA (Hons) Business / Economics BA (Hons) Business / Economics (with overseas study) BA (Hons) Business / Economics (with placement) BA (Hons) Business / French BA (Hons) Business / Human Resource Management BA (Hons) Business / Human Resource Management (with overseas study) BA (Hons) Business / Human Resource Management (with placement) BA (Hons) Business / Marketing BA (Hons) Business / Marketing (with overseas study) BA (Hons) Business / Marketing (with placement)

Manchester Metropolitan University England

www.mmu.ac.uk
international@mmu.ac.uk

L3IFDHES	Entry Requirements	Year 1 Entry to
Business	<p>IELTS 6.0 overall (min. 5.5 in each subcomponent) or equivalent</p> <p>Overall average of 50% and no less than 40% in any module; optional L3IFDHES/IFD modules must be appropriate to the chosen degree programme</p>	<ul style="list-style-type: none"> BA (Hons) Economics (sandwich) BA (Hons) Economics (with overseas study) BA (Hons) Economics and Banking BA (Hons) Economics and Banking (with overseas study) BA (Hons) Economics and Banking (with placement) BA (Hons) Economics and Finance BA (Hons) Economics / International Business BA (Hons) Economics / International Business (with overseas study) BA (Hons) Economics / International Business (with placement) BA / BSc (Hons) Economics / Politics BA / BSc (Hons) Economics / Politics (with overseas study) BA / BSc (Hons) Economics / Politics (with placement) BA (Hons) Events Management BA (Hons) Hospitality Business Management BA (Hons) Human Resource Management BA (Hons) Human Resource Management (sandwich) BA (Hons) Human Resource Management (with overseas study) BA (Hons) International Business Management BA (Hons) International Business Management (with overseas study) BA (Hons) International Business Management (with placement) BA (Hons) International Business with French BA (Hons) International Business with German BA (Hons) International Business with Italian BA (Hons) International Business with Japanese BA (Hons) International Business with Mandarin Chinese BA (Hons) International Business with Modern Standard Arabic BA (Hons) International Business with Spanish BA (Hons) International Business / Marketing BA (Hons) International Business / Marketing (with overseas study) BA (Hons) Marketing Management BA (Hons) Marketing Management (sandwich) BA (Hons) Marketing Management (with overseas study) BA (Hons) Public Relations and Marketing BA (Hons) Public Relations and Marketing (sandwich) BA (Hons) Public Relations and Marketing (with overseas study) BA (Hons) Retail Management and Marketing BA (Hons) Retail Management and Marketing (with overseas study) BA (Hons) Retail Management and Marketing (with placement) BSc (Hons) Sport: Coaching and Development

Manchester Metropolitan University England

www.mmu.ac.uk
international@mmu.ac.uk

L3IFDHES	Entry Requirements	Year 1 Entry to
Business	<p>IELTS 6.0 overall (min. 5.5 in each subcomponent) or equivalent</p> <p>Overall average of 50% and no less than 40% in any module; optional L3IFDHES/IFD modules must be appropriate to the chosen degree programme</p>	<ul style="list-style-type: none"> BA (Hons) Sports Management BA (Hons) Sports Management (sandwich) BA (Hons) Sports Management (with overseas study) BA (Hons) Sports Marketing Management BA (Hons) Sports Marketing Management (sandwich) BA (Hons) Sports Marketing Management (with overseas study) BA (Hons) Tourism Management BA (Hons) Fashion Business and Management BA (Hons) Fashion Buying and Merchandising
Computing	<p>IELTS 6.0 overall (min. 5.5 in each subcomponent) or equivalent</p> <p>Overall average of 50% and no less than 40% in any module; optional L3IFDHES/IFD modules must be appropriate to the chosen degree programme</p>	<ul style="list-style-type: none"> BSc (Hons) Computer Animation and Visual Effects BSc (Hons) Computer Forensics and Security BSc (Hons) Computer Games Technology BSc (Hons) Computing BSc (Hons) Games Design and Development BSc (Hons) Software Engineering BSc (Hons) Web Technologies
Engineering	<p>IELTS 6.0 overall (min. 5.5 in each subcomponent) or equivalent</p> <p>Overall average of 50% and no less than 40% in any module; optional L3IFDHES/IFD modules must be appropriate to the chosen degree programme</p>	<ul style="list-style-type: none"> BSc (Hons) Design Engineering BEng (Hons) Electrical and Electronic Engineering BA (Hons) Product Design and Technology
Health Sciences	<p>IELTS 6.0 overall (min. 5.5 in each subcomponent) or equivalent</p> <p>Overall average of 50% and no less than 40% in any module; optional L3IFDHES/IFD modules must be appropriate to the chosen degree programme</p>	<ul style="list-style-type: none"> BSc (Hons) Biology BSc (Hons) Biology with study in Europe, North America or Australia BSc (Hons) Biomedical Science BSc (Hons) Chemistry BSc (Hons) Human Biosciences BSc (Hons) Human Geography BSc (Hons) Human Geography (sandwich) BSc (Hons) Human Geography with Study in North America or Australia BSc (Hons) Medicinal and Biological Chemistry BSc (Hons) Medicinal and Biological Chemistry (with overseas study) BSc (Hons) Microbiology and Molecular Biology BSc (Hons) Microbiology and Molecular Biology (with overseas study) BSc (Hons) Nutritional Sciences BSc (Hons) Pharmaceutical Chemistry BSc (Hons) Pharmaceutical Chemistry (with overseas study) BSc (Hons) Sport and Exercise Nutrition BSc (Hons) Sport and Exercise Science BSc (Hons) Sport Science and Human Physiology BSc (Hons) Sport, Physical Activity and Health

Massey University New Zealand

www.massey.ac.nz
international@massey.ac.nz

L3IFDHES	Entry Requirements	Year 1 Entry to
Any / relevant to study area	<p>Please refer to the university website for English Language requirements.</p> <p>Applications considered on a case by case basis for standard undergraduate level programmes</p>	<ul style="list-style-type: none"> Bachelor of Accountancy Bachelor of AgriCommerce Bachelor of Agricultural Science Bachelor of Animal Science Bachelor of Applied Economics Bachelor of Arts (Economics) Bachelor of Arts (Educational Psychology) Bachelor of Arts (Environmental Studies) Bachelor of Arts (Psychology) Bachelor of Arts (Mathematics) Bachelor of Arts (Statistics) Bachelor of Arts (Sociology) Bachelor of Arts (Social Policy) Bachelor of Arts (Media Studies) Bachelor of Arts (Education) Bachelor of Arts (Business Psychology) Bachelor of Aviation Management Bachelor of Business (Strategic Communication) Bachelor of Business (Property) Bachelor of Business (Organisational Technology Management) Bachelor of Business (Marketing) Bachelor of Business (Management) Bachelor of Business (International Business) Bachelor of Business (Human Resource Management and Employment Relations) Bachelor of Business (Financial Planning and Advice) Bachelor of Business (Finance) Bachelor of Business (Economics) Bachelor of Business (Accountancy) Bachelor of Communication (Public Relations) Bachelor of Communication (Media Studies) Bachelor of Communication (Digital Marketing) Bachelor of Communication (Communication Management) Bachelor of Education Bachelor of Engineering with Honours (Electronics and Computer Engineering) Bachelor of Engineering with Honours (Mechatronics) Bachelor of Engineering with Honours (Engineering and Innovation Management) Bachelor of Engineering with Honours (Chemical and Bioprocess Engineering) Bachelor of Horticultural Science Bachelor of Information Sciences (Computer Science) Bachelor of Information Sciences (Software Engineering) Bachelor of Information Sciences (Information Technology) Bachelor of Information Sciences (Information Systems) Bachelor of Information Sciences (Data Science)

Massey University New Zealand

www.massey.ac.nz
international@massey.ac.nz

L3IFDHES	Entry Requirements	Year 1 Entry to
Any / relevant to study area	<p>Please refer to the university website for English Language requirements.</p> <p>Applications considered on a case by case basis for standard undergraduate level programmes</p>	<ul style="list-style-type: none"> Bachelor of Nursing Bachelor of Resource and Environmental Planning Bachelor of Retail and Business Management Bachelor of Science (Computer Science) Bachelor of Science (Chemistry) Bachelor of Science (Data Science) Bachelor of Science (Earth Science) Bachelor of Science (Ecology) Bachelor of Science (Ecology and Sustainability) Bachelor of Science (Environmental Science) Bachelor of Science (Exercise and Sport Science) Bachelor of Science (Human Nutrition) Bachelor of Science (Integrative Biology) Bachelor of Science (International Agriculture) Bachelor of Science (Marine Biology) Bachelor of Science (Mathematics) Bachelor of Science (Microbiology) Bachelor of Science (Molecular and Cellular Biology) Bachelor of Science (Physics) Bachelor of Science (Physiology) Bachelor of Science (Plant Science) Bachelor of Science (Psychology) Bachelor of Science (Statistics) Bachelor of Science (Zoology) Bachelor of Social Work Bachelor of Speech and Language Therapy with Honours Bachelor of Sport and Exercise Bachelor of Sport Management

Media Design School New Zealand

www.mediadesignschool.com
international@mediadesignschool.com

L3IFDHES	Entry Requirements	Year 1 Entry to
Relevant to study area	<p>Overall score 6.0 with no band less than 5.5</p> <p>Overall average of 40% (Pass). High School Certificate/Transcripts that show ability in Maths or Physics.</p>	<ul style="list-style-type: none"> Bachelor of Software Engineering - Game Programming Bachelor of Software Engineering - Artificial Intelligence Bachelor of Software Engineering - Cloud Computing
Computing	<p>Overall score 6.0 with no band less than 5.5</p> <p>Overall average of 40% (Pass)</p>	<ul style="list-style-type: none"> Bachelor of Media Design Bachelor of Art and Design - 3D Animation and Visual Effects Bachelor of Creative Technologies - Game Art

Nagoya University of Commerce and Business Japan

www.nucba.ac.jp
intl_adm@nucba.ac.jp

L3IFDHES	Entry Requirements	Year 1 Entry to
Business; Finance	<p>For IELTS requirements, please see https://www.nucba.ac.jp/en/admission/schedule/</p> <p>Successful completion of the course. Applications will be considered on a case-by-case basis only.</p>	<ul style="list-style-type: none"> Global Bachelor of Business Administration

National College of Ireland Ireland

GUARANTEED
www.ncirl.ie
admissions@ncirl.ie

L3IFDHES	Entry Requirements	Year 1 Entry to
Business	<p>IELTS 6.0 Overall</p> <p>Overall average of 50% or above</p>	<ul style="list-style-type: none"> BA (Hons) Accounting and Finance BA (Hons) Business BA (Hons) HRM BA (Hons) Marketing Practice

Northumbria University England

www.northumbria.ac.uk
international@northumbria.ac.uk

L3IFDHES	Entry Requirements	Year 1 Entry to
Computing	IELTS 6.0 (no band less than 5.5) Overall average of 50% or above	<ul style="list-style-type: none"> BSc (Hons) Computer Science BSc (Hons) Computer Science with Games Development BSc (Hons) Information Technology Management for Business BSc (Hons) Computer Science with Web Development

Northwood University USA

www.northwood.edu
intprograms@northwood.edu

L3IFDHES	Entry Requirements	Year 1 Entry to
Any / relevant to study area	Minimum 6.0 overall band score Overall average of 40% (Pass)	<ul style="list-style-type: none"> Accounting Applied Management Automotive Aftermarket Management Automotive Marketing & Management Business Analytics (Minor) Cybersecurity Management Economics Esports Management Entrepreneurship Fashion Marketing and Management Finance Franchising Management Health Care Management Hospitality Management Insurance Risk Management International Business Management Management Information Systems Marketing Marketing Communications Operations and Supply Chain Management Sport Management Strategic Management

A leading U.S. university for business degrees Preparing Global Leaders

Northwood University is a nationally-ranked American university that focuses on preparing the next generation of global entrepreneurs and leaders. When you choose to come to Northwood, you will join an international group of motivated young adults who want to achieve career success. More than 1,000 non-U.S. students study at Northwood University annually.

- IFY entry Year 1 to all Bachelor of Business Administration degrees
- Level 5 Diploma in Business entry Year 3 to Bachelor of Business Administration degree in Management
- Level 5 Diploma in Business IT Year 3 entry to Bachelor of Business Administration degree in Management Information Systems



Northwood University opened its doors and welcomed us wholeheartedly – from the Midland community, to Northwood professors and other students. Its reputation combined with the dedication of the professors and staff challenged us to stand out in a sea of many. Northwood University is an ideal place to learn and develop individual responsibility."

Natasha and Natalia Bong, Malaysia
BBA graduates in International Business & Management
Northwood University



Northwood.edu
Midland, Michigan
United States of America

Northwood University is accredited by the Higher Learning Commission and is a member of the North Central Association (higherlearningcommission.org)



Nottingham Trent University England

www.ntu.ac.uk
international@ntu.ac.uk

L3IFDHE	Entry Requirements	Year 1 Entry to
Business	IELTS 6.5 with minimum of 5.5 in each component 60% and above	<ul style="list-style-type: none"> BA (Hons) Business BA (Hons) Business Management and Accounting and Finance BA (Hons) Business Management and Economics BA (Hons) Business Management and Entrepreneurship BA (Hons) Business Management and Human Resources BA (Hons) Business Management and Marketing BA (Hons) Economics BA (Hons) Economics, Finance and Banking BA (Hons) Business Economics BA (Hons) Accounting and Finance BA (Hons) International Business
Computing	IELTS 6.5 (no band less than 5.5) Overall average of 55% and above	<ul style="list-style-type: none"> BSc (Hons) Computer Science BSc (Hons) Computer Science (Games Technology) BSc (Hons) Software Engineering BSc (Hons) Information Systems BSc (Hons) Computing BSc (Hons) Computer Systems Engineering BSc (Hons) Computer Systems (Networks) BSc Computer Systems (Cyber Security)
Engineering	IELTS 6.0 (no band less than 5.5) Overall average of 55% (Pass) and pass in Physics and Further Mathematics	<ul style="list-style-type: none"> BEng Electronics Engineering BEng Sports Engineering

OXFORD BROOKES UNIVERSITY

Study in a world-renowned student city



The **only UK university** ranked in the top 50 institutions under 50 years old for the fourth year in a row

QS World University Rankings Top 50 Under 50 2021

A great place to learn

Among the world's top universities in 13 individual subject areas:

- Accounting and Finance
- Architecture & Built Environment
- Biological Sciences
- Business & Management Studies
- Computer Science & Information Systems
- Economics & Econometrics
- Education
- Engineering – Mechanical, Aeronautical & Manufacturing
- English Language and Literature
- Hospitality & Leisure Management
- Law
- Modern Languages
- Politics & International Studies

QS World University Rankings by Subject 2020

NCC
Progression
routes available
for over 120
undergraduate and
postgraduate
courses

**Early Acceptance
Scholarships of
£2,000 available to
international students**

Contact us:
brookes.ac.uk/askaquestion



Oxford Brookes University England

www.brookes.ac.uk
admissions@brookes.ac.uk

L3IFDHEs	Entry Requirements	Year 1 Entry to
Any / relevant to study area	<p>IELTS 6.0 overall with 6.0 in reading and writing, 5.5 in listening and speaking</p> <p>Successful completion with an overall average of at least 60% or the grade 'Merit'. The Foundation Maths module must be passed for entry to OBBS Undergraduate courses.</p>	<ul style="list-style-type: none"> BSc (Hons) Accounting and Economics BSc (Hons) Accounting and Finance BA (Hons) Business, Business Enterprise and Entrepreneurship BSc (Hons) Business and Finance BA (Hons) Business and Law BA (Hons) Business and Management BA (Hons) Business and Marketing Management BA (Hons) Business Management and International Relations BSc (Hons) Economics, Finance and International Business BA (Hons) Economics, Politics and International Relations BA (Hons) Events Management BA (Hons) International Business Management BSc (Hons) International Hospitality Management BA (Hons) Marketing and Events Management BA (Hons) Marketing Communications Management BA (Hons) Marketing Management
	<p>IELTS 6.0 overall with 6.0 in reading and writing, 5.5 in listening and speaking</p> <p>Successful completion with an overall average of at least 60% or the grade 'Merit'. Applicants must also submit a Portfolio and may be asked to an interview.</p>	<ul style="list-style-type: none"> BSc (Hons) or MSci Artificial Intelligence BSc (Hons) Building Surveying BSc (Hons) Computer Science BSc (Hons) Computer Science for Cyber Security BSc (Hons) Information Technology for Business BSc (Hons) Construction Project Management BSc (Hons) Music BA (Hons) or BSc (Hons) Digital Media Production BA (Hons) Film BA (Hons) Media, Journalism and Publishing BA (Hons) Property Management and Planning BSc (Hons) Quantity Surveying and Commercial Management BA (Hons) Urban Design, Planning and Development
	<p>IELTS 6.0 overall with 6.0 in reading and writing, 5.5 in listening and speaking</p> <p>Successful completion with an overall average of at least 60% or the grade 'Merit'. Applicants must also submit a Portfolio and may be asked to an interview.</p>	<ul style="list-style-type: none"> BA (Hons) Fine Art BA (Hons) Graphic Design BA (Hons) Photography

Oxford Brookes University England

www.brookes.ac.uk
admissions@brookes.ac.uk

L3IFDHEs	Entry Requirements	Year 1 Entry to
Any / relevant to study area	<p>IELTS 6.5 overall with 6.5 in reading and writing, 6.0 in listening and speaking</p> <p>Successful completion with an overall average of at least 60% or the grade 'Merit'. Applicants must also submit a Portfolio and may be asked to an interview.</p>	<ul style="list-style-type: none"> BA (Hons) Interior Architecture
	<p>IELTS 6.5 overall with 6.0 in reading and writing, 5.5 in listening and speaking</p> <p>Successful completion with an overall average of at least 65%. Applicants must also submit a Portfolio and may be asked to an interview.</p>	<ul style="list-style-type: none"> BA (Hons) Architecture
	<p>IELTS 6.0 overall with 6.0 in reading and writing, 5.5 in listening and speaking</p> <p>Successful completion with an overall average of at least 60% or the grade of 'Merit'. Applicants must pass Further Mathematics and either Physics or Chemistry with at least 60%.</p>	<ul style="list-style-type: none"> BEng (Hons) Automotive Engineering BEng (Hons) Mechanical Engineering BEng (Hons) Motorsport Engineering
	<p>IELTS 6.0 overall with 6.0 in reading and writing, 5.5 in listening and speaking</p> <p>Successful completion with an overall average of at least 60% or the grade 'Merit'. Applicants must pass Foundation Mathematics with at least 50%.</p>	<ul style="list-style-type: none"> BEng (Hons) Mechanical Engineering Design BEng (Hons) Motorsport Technology

Oxford Brookes University England

www.brookes.ac.uk
admissions@brookes.ac.uk

L3IFDHEs	Entry Requirements	Year 1 Entry to
Any / relevant to study area	<p>IELTS 6.0 overall with 6.0 in reading and writing, 5.5 in listening and speaking</p> <p>Successful completion with an overall average of at least 60% or the grade 'Merit'.</p>	<ul style="list-style-type: none"> BSc (Hons) Anthropology BA (Hons) or BSc (Hons) Anthropology and Communication, Media and Culture BA (Hons) or BSc (Hons) Anthropology and Geography BA (Hons) Anthropology and History BA (Hons) Anthropology and History of Art BA (Hons) or BSc (Hons) Anthropology and International Relations BA (Hons) or BSc (Hons) Anthropology and Philosophy BA (Hons) or BSc (Hons) Anthropology and Sociology BSc (Hons) Biological Anthropology BA (Hons) Communication, Media and Culture BA (Hons) Communication, Media and Culture and English Language and Linguistics BA (Hons) Communication, Media and Culture and International Relations BA (Hons) Communication, Media and Culture and Politics BA (Hons) Communication, Media and Culture and Sociology BSc (Hons) Criminology BA (Hons) Criminology and Anthropology BA (Hons) Criminology and Education Studies BA (Hons) Criminology and History BA (Hons) Criminology and International Relations BSc (Hons) Criminology and Law BA (Hons) Criminology and Politics BA (Hons) Criminology and Sociology BA (Hons) Early Childhood Studies BA (Hons) Education Studies BA (Hons) Education Studies and English Language and Linguistics BA (Hons) Education Studies and History BA (Hons) or BSc (Hons) Education Studies and Sociology BA (Hons) English Language and Linguistics BA (Hons) English Language and Linguistics and Japanese Studies BA (Hons) Geography and History BA (Hons) or BSc (Hons) Geography and International Relations BA (Hons) History BA (Hons) History and History of Art BA (Hons) History and International Relations BA (Hons) History and Politics BA (Hons) History of Art BA (Hons) History of Art and Sociology BA (Hons) or BSc (Hons) International Relations BA (Hons) International Relations and Japanese Studies

Oxford Brookes University England

www.brookes.ac.uk
admissions@brookes.ac.uk

L3IFDHEs	Entry Requirements	Year 1 Entry to
Any / relevant to study area	<p>IELTS 6.0 overall with 6.0 in reading and writing, 5.5 in listening and speaking</p> <p>Successful completion with an overall average of at least 60% or the grade of 'Merit'. Applicants must pass the Further Mathematics unit with at least 60%.</p>	<ul style="list-style-type: none"> BSc (Hons) Mathematics
	<p>IELTS 6.0 overall with 6.0 in reading and writing, 5.5 in listening and speaking.</p> <p>Successful completion with an overall average of at least 65%.</p>	<ul style="list-style-type: none"> BSc (Hons) Real Estate
	<p>IELTS 6.0 overall with 6.0 in reading and writing, 5.5 in listening and speaking.</p> <p>Successful completion with an overall average of at least 60% or the grade 'Merit'.</p>	<ul style="list-style-type: none"> BA (Hons) or BSc (Hons) International Relations and Philosophy BA (Hons) International Relations and Politics BA (Hons) or BSc (Hons) International Relations and Sociology BA (Hons) Japanese Studies BA (Hons) Philosophy BA (Hons) or BSc (Hons) Philosophy and Politics BA (Hons) or BSc (Hons) Philosophy and Sociology BA (Hons) Social Anthropology BA (Hons) Sociology
	<p>6.5 overall with 6.5 in reading and writing, 6.0 in listening and speaking.</p> <p>Successful completion with an overall average of at least 60% or the grade of 'Merit'.</p>	<ul style="list-style-type: none"> LLB (Hons) Law LLB (Hons) Law with Business LLB (Hons) Law with Criminology
	<p>IELTS 6.0 overall with 6.0 in reading and writing, 5.5 in listening and speaking.</p> <p>Successful completion with an overall average of at least 60% or the grade 'Merit'. All eligible applicants must also attend an interview and undertake relevant clearances.</p>	<ul style="list-style-type: none"> BA (Hons) Primary Teacher Education

Oxford Brookes University England

www.brookes.ac.uk
admissions@brookes.ac.uk

L3IFDHES	Entry Requirements	Year 1 Entry to
Any / relevant to study area	<p>IELTS 6.0 overall with 6.0 in reading and writing, 5.5 in listening and speaking</p> <p>Successful completion with an overall average of at least 60% or the grade 'Merit'.</p>	<ul style="list-style-type: none"> BA (Hons) History and Japanese Studies BA (Hons) Politics BA (Hons) Politics and Sociology
	<p>IELTS 6.0 overall with 6.0 in reading and writing, 5.5 in listening and speaking</p> <p>Successful completion with an overall average of at least 60% or the grade 'Merit'. Applicants must pass Foundation Mathematics with at least 40% and one of Biology / Chemistry / Physics with at least 40%.</p>	<ul style="list-style-type: none"> BSc (Hons) Animal Biology and Conservation BSc (Hons) Biological Sciences BSc (Hons) Biological Sciences (Genetics and Genomics) BSc (Hons) Biological Sciences (Human Biosciences) BSc (Hons) Biological Sciences (Zoology) BSc (Hons) Biomedical Science BSc (Hons) Medical Science BSc (Hons) Sport and Exercise Science MBiol Biological Sciences
	<p>IELTS 6.0 overall with 6.0 in reading and writing, 5.5 in listening and speaking</p> <p>Successful completion with an overall average of at least 60% or the grade 'Merit'.</p>	<ul style="list-style-type: none"> BSc (Hons) Physical Activity and Health Promotion BSc (Hons) Sport, Coaching and Physical Education
	<p>IELTS 6.0 overall with 6.0 in reading and writing, 5.5 in listening and speaking.</p> <p>Successful completion with an overall average of at least 60% or the grade 'Merit'. Applicants must pass Foundation Mathematics with at least 40%.</p>	<ul style="list-style-type: none"> BSc (Hons) Psychology

Oxford Brookes University England

www.brookes.ac.uk
admissions@brookes.ac.uk

L3IFDHES	Entry Requirements	Year 1 Entry to
Any / relevant to study area	<p>IELTS 6.5 overall with 6.5 in reading and writing, 6.0 in listening and speaking</p> <p>Successful completion with an overall average of at least 60% or the grade 'Merit'. Applicants must pass Foundation Mathematics with at least 40% and one of Biology/Chemistry/Physics with at least 40%. Relevant healthcare experience is required at the point of application. All eligible applicants must also attend an interview and undertake relevant clearances.</p>	<ul style="list-style-type: none"> BSc (Hons) Nursing (Adult) BSc (Hons) Nursing (Children's) BSc (Hons) Nursing (Mental Health) MSci Nursing (Adult and Mental Health) BSc (Hons) Paramedic Science
	<p>IELTS 6.5 overall with a minimum of 6.0 in each component</p> <p>Successful completion with an overall average of at least 60% or the grade 'Merit'. Applicants must pass Foundation Mathematics with at least 40% and two of the following Biology/Chemistry/Physics with at least 40%.</p>	<ul style="list-style-type: none"> BSc (Hons) Nutrition
	<p>IELTS 6.5 overall with 6.5 in reading and writing, 6.0 in listening and speaking</p> <p>Successful completion with an overall average of at least 70% or the grade 'Distinction'. Applicants must pass Foundation Mathematics with at least 40% and one of Biology/Chemistry/Physics with at least 40%. Relevant healthcare experience is required at the point of application. All eligible applications must also attend an interview and undertake relevant clearances.</p>	<ul style="list-style-type: none"> BSc (Hons) Midwifery

Oxford Brookes University England

www.brookes.ac.uk
admissions@brookes.ac.uk

L3IFDHES	Entry Requirements	Year 1 Entry to
Any / relevant to study area	<p>IELTS 6.5 overall with 6.5 in reading and writing, listening and speaking</p> <p>Successful completion with an overall average of at least 60% or the grade 'Merit'. Applicants must pass Foundation Mathematics with at least 40%. Relevant healthcare experience is required at the point of application. All eligible applicants must also attend an interview and undertake relevant clearances.</p>	<ul style="list-style-type: none"> BSc (Hons) Occupational Therapy
	<p>IELTS 6.5 overall with 6.5 in reading and writing, listening and speaking</p> <p>Successful completion with an overall average of at least 70% or the grade 'Distinction'. Applicants must pass Foundation Mathematics with at least 40% and Biology with at least 70%. Relevant healthcare experience is required at the point of application. All eligible applicants must also attend an interview and undertake relevant clearances.</p>	<ul style="list-style-type: none"> BSc (Hons) Physiotherapy
	<p>IELTS 7.0 overall with 7.0 in reading and writing, 6.5 in listening and speaking</p> <p>Successful completion with an overall average of at least 60% or the grade 'Merit'. Applicants must pass Foundation Mathematics with at least 40%. Relevant healthcare experience is required at the point of application. All eligible applicants must also attend an interview and undertake relevant clearances.</p>	<ul style="list-style-type: none"> BA (Hons) Social Work

Royal Holloway, University of London England

www.royalholloway.ac.uk
study@royalholloway.ac.uk

L3IFDHES	Entry Requirements	Year 1 Entry to
Any / relevant to study area	<p>IELTS 6.5 overall (subscores depend on the specific programme applied to)</p> <p>Equivalent requirements to A-Levels are ABB = 65%, AAB = 70% and AAA = 75%. Students will need to be taking relevant subjects in the foundation to be considered and offers are not guaranteed.</p>	<ul style="list-style-type: none"> BSc Psychology
Business	<p>IELTS 6.5 overall (subscores depend on the specific programme applied to)</p> <p>Equivalent requirements to A-Levels are ABB = 65%, AAB = 70% and AAA = 75%. Students will need to be taking relevant subjects in the foundation to be considered and offers are not guaranteed.</p>	<ul style="list-style-type: none"> BSc Business and Management BSc Business and Management with a Year in Business BSc Management with International Business with a Year in Business BSc Management with International Business BSc Management with Marketing with a Year in Business BSc Management with Accounting with a Year in Business BSc Management with Entrepreneurship with a Year in Business BSc Management with Human Resources with a Year in Business BSc Management with Digital Innovation with a Year in Business BSc Management with Corporate Responsibility with a Year in Business BSc Management with Marketing BA Modern Languages and Management BSc Management with Human Resources BSc Management with Entrepreneurship BSc (Econ) Economics with a Year in Business BSc Management with Digital Innovation BSc Management with Corporate Responsibility
Computing	<p>IELTS 6.5 overall (subscores depend on the specific programme applied to)</p> <p>Equivalent requirements to A-Levels are ABB = 65%, AAB = 70% and AAA = 75%. Students will need to be taking relevant subjects in the foundation to be considered and offers are not guaranteed.</p>	<ul style="list-style-type: none"> BSc Computer Science BSc Computer Science with a Year in Industry MSci in Computer Science MSci in Computer Science with a Year in Industry

Royal Holloway, University of London England

www.royalholloway.ac.uk
study@royalholloway.ac.uk

L3IFDHES	Entry Requirements	Year 1 Entry to
Engineering	<p>IELTS 6.5 overall (subscores depend on the specific programme applied to)</p> <p>Equivalent requirements to A-Levels are ABB = 65%, AAB = 70% and AAA = 75%. Students will need to be taking relevant subjects in the foundation to be considered and offers are not guaranteed.</p>	<ul style="list-style-type: none"> BEng Electronic Engineering BEng Electronic Engineering with a Year in Industry MEng Electronic Engineering MEng Electronic Engineering with a Year in Industry BEng Computer Systems Engineering MEng Computer Systems Engineering BEng Computer Systems Engineering with a Year in Industry MEng Computer Systems Engineering with a Year in Industry
Finance	<p>IELTS 6.5 overall (subscores depend on the specific programme applied to)</p> <p>Equivalent requirements to A-Levels are ABB = 65%, AAB = 70% and AAA = 75%. Students will need to be taking relevant subjects in the foundation to be considered and offers are not guaranteed.</p>	<ul style="list-style-type: none"> BSc Economics and Management with a Year in Business BSc Economics and Management BSc Management with Accounting BSc (Econ) Financial and Business Economics BSc Accounting and Finance with a Year in Business BSc Finance and Mathematics with a Year in Business BSc Economics and Mathematics with a Year in Business BSc (Econ) Economics and Econometrics with a Year in Business BSc (Econ) Financial and Business Economics with a Year in Business BSc (Econ) Economics with Political Studies with a Year in Business BSc Economics, Politics and International Relations with a Year in Business
Health Sciences	<p>IELTS 6.5 overall (subscores depend on the specific programme applied to)</p> <p>Equivalent requirements to A-Levels are ABB = 65%, AAB = 70% and AAA = 75%. Students will need to be taking relevant subjects in the foundation to be considered and offers are not guaranteed.</p>	<ul style="list-style-type: none"> BSc Biochemistry BSc Biology BSc Biomedical Sciences BSc Ecology and Conservation BSc Medical Biochemistry BSc Molecular Biology BSc Zoology

Sheffield Hallam University England

www.shu.ac.uk
uginternational@shu.ac.uk

L3IFDHES	Entry Requirements	Year 1 Entry to
Business	<p>IELTS 6.0 (no band less than 5.5)</p> <p>Overall average of 60% (Merit) or above</p>	<ul style="list-style-type: none"> BSc Hons Food Marketing and Product Development BSc Hons Food and Nutrition BSc Hons Hospitality Business Management BSc Hons International Hotel Management BSc Hons Events Management BSc Hons International Tourism and Hospitality Business Management BSc Hons International Tourism Management BA Hons Business Economics BA Hons Business Studies BA Business and Financial Management BA Hons Business and Human Resource Management BA Hons Marketing Communications and Advertising with Foundation Year BA Hons Business and Marketing BA Hons Marketing
	<p>IELTS 6.0 (no band less than 5.5)</p> <p>Overall average of 70% Distinction</p>	<ul style="list-style-type: none"> BA Hons Forensic Accounting
Computing	<p>IELTS 6.0 (no band less than 5.5)</p> <p>Overall average of 55% and above</p>	<ul style="list-style-type: none"> BSc Computing BEng Software Engineering
	<p>IELTS 6.0 (no band less than 5.5)</p> <p>Overall average of 60% (Merit) or above</p>	<ul style="list-style-type: none"> BSc Cyber Security with Forensics and Foundation Year
	<p>Overall average of 65% (Maths 60%) & Interview</p> <p>IELTS 6.0 (no band less than 5.5)</p>	<ul style="list-style-type: none"> BSc Computer Science

SIM Global Education, Singapore Institute of Management Singapore

www.sim.edu.sg
study@sim.edu.sg

L3IFDHES	Entry Requirements	Year 1 Entry to
Any / relevant to study area	<p>IELTS 5.5 or equivalent</p> <p>All applications with minimum 60% Merit will be considered on a case-by-case basis only. Upon completion of the SIM Diploma, students are then eligible for up to 1.5 years credit exemption on undergraduate programmes. Please contact SIM for further details.</p>	<ul style="list-style-type: none"> • Diploma in Accounting • Diploma in Banking and Finance • Diploma in International Business • Diploma in Management Studies • Diploma in Information Technology

Southern Cross University Australia

www.scu.edu.au/study-at-scu/help-and-contact/international-enquiry/

L3IFDHES	Entry Requirements	Year 1 Entry to
Any / relevant to study area	<p>IELTS 6.0 - See https://www.scu.edu.au/study-at-scu/2020-international-courses-and-fees/</p> <p>Minimum 60%. Contact office for further details.</p>	<ul style="list-style-type: none"> • Bachelor of Arts • Bachelor of Social Welfare • Bachelor of Accounting • Bachelor of Business • Bachelor of Business in Convention and Event Management • Bachelor of Business in Hotel Management • Bachelor of Business in Tourism and Hospitality Management • Bachelor of Business, Bachelor of Laws • Bachelor of Digital Business • Bachelor of Digital Media and Communications • Bachelor of Information Technology • Bachelor of Engineering (Honours) in Civil Engineering • Bachelor of Engineering (Honours) in Coastal Systems Engineering • Bachelor of Engineering (Honours) in Mechanical Engineering • Bachelor of Science • Bachelor of Biomedical Science • Bachelor of Clinical Sciences (Osteopathic Studies) • Bachelor of Exercise Science and Psychological Science • Bachelor of Midwifery • Bachelor of Nursing • Bachelor of Occupational Therapy • Bachelor of Podiatry • Bachelor of Podiatry, Bachelor of Podorthotics • Bachelor of Psychological Science

Southern Cross University Australia

www.scu.edu.au/study-at-scu/help-and-contact/international-enquiry/

L3IFDHES	Entry Requirements	Year 1 Entry to
Any / relevant to study area	<p>IELTS 6.0 - See https://www.scu.edu.au/study-at-scu/2020-international-courses-and-fees/</p> <p>Minimum 60%. Contact office for further details.</p>	<ul style="list-style-type: none"> • Bachelor of Speech Pathology • Bachelor of Sport and Exercise Science • Bachelor of Laws – Undergraduate entry • Bachelor of Laws and Creative Writing • Bachelor of Legal and Justice Studies • Bachelor of Legal and Justice Studies, Bachelor of Laws • Bachelor of Environmental Science • Bachelor of Environmental Science / Bachelor of Marine Science and Management • Bachelor of Forest Science and Management • Bachelor of Marine Science and Management • Sociology & Anthropology • Art • Biology (BA, BS, minor) • Business Administration with Management • Business Administration with Marketing • Chemistry • Chemistry with Biochemistry • Chemistry with Forensic Chemistry • Communication • Criminal Justice • Education Studies • Emerging Media & Digital Arts • English • Environmental Science & Policy • Health and Physical Education • History • International Studies • Music • Political Science • Psychology • Theatre
Business	<p>IELTS 5.5 Overall</p> <p>Overall average of 45%</p>	<ul style="list-style-type: none"> • Business Administration • Business Administration with Accounting • Business Administration with Hospitality and Tourism Management • Economics
Computing	<p>IELTS 5.5 Overall</p> <p>Overall average of 45%</p>	<ul style="list-style-type: none"> • Computer Science
Engineering	<p>IELTS 5.5 Overall</p> <p>Overall average of 45%</p>	<ul style="list-style-type: none"> • Engineering and Mathematics

Staffordshire University England

www.staffs.ac.uk
iss@staffs.ac.uk

L3IFDHES	Entry Requirements	Year 1 Entry to
Business	IELTS 6.0 (no band less than 5.5) Overall average of 40% (Pass)	<ul style="list-style-type: none"> Accounting and Business Accounting and Finance Business and Human Resource Management BA (Hons) Business and Marketing Management BA (Hons) Business Management BA (Hons) Business Management and Enterprise BA (Hons) Business Management (Two Year Fast Track) BA (Hons) Digital Marketing Management BSc (Hons) International Business Management BA (Hons) Business Economics BSc (Hons) Business and Human Resource Management BA (Hons) Business and Marketing Management BA (Hons) Digital Marketing Management BSc (Hons) Visitor Attraction and Resort Management Foundation Degree Tourism Management BA (Hons) Tourism Management Two Year Fast Track BA (Hons) Events Management BA (Hons) Events Management Two Year Fast Track BA (Hons)

Study Group Coventry University England

www.studygroup.com
www.studygroup.com/study/enquiry-form

L3IFDHES	Entry Requirements	Year 1 Entry to
	IELTS 5.0 overall (5.0 writing, other subscore over 4.0) IFD Pass at 40%	<ul style="list-style-type: none"> Business Management Finance and Accounting

Study Group University of Aberdeen Scotland

www.studygroup.com
www.studygroup.com/study/enquiry-form

L3IFDHES	Entry Requirements	Year 1 Entry to
	5.5 overall (5.5 writing, other subscore over 5.0) IFD Merit at 60%	<ul style="list-style-type: none"> Business Management Finance

Study Group University of Huddersfield England

www.studygroup.com
www.studygroup.com/study/enquiry-form

L3IFDHES	Entry Requirements	Year 1 Entry to
	5.0 overall (5.0 writing, other subscore over 4.0) An overall IFD grade of 40%	<ul style="list-style-type: none"> Business Management Marketing Engineering Computing

Study Group University of Lincoln England

www.studygroup.com
www.studygroup.com/study/enquiry-form

L3IFDHES	Entry Requirements	Year 1 Entry to
	5.0 overall (each subscore over 4.0) IFD Pass at 40%, English Test Passes at 35%	<ul style="list-style-type: none"> Business Management Computing Science Media Studies Engineering

Study Group University of Sussex England

www.studygroup.com
www.studygroup.com/study/enquiry-form

L3IFDHES	Entry Requirements	Year 1 Entry to
	IELTS 5.5 overall (5.5 writing, other subscore over 4.0) IFD Pass at 50%; NCC English Test Passes at 40%	<ul style="list-style-type: none"> • Business Management • Computing • Engineering • Finance and Accounting • International Relations and Development • Media and Film Studies

Swansea University Wales

www.swansea.ac.uk
international.admissions@swansea.ac.uk

L3IFDHES	Entry Requirements	Year 1 Entry to
Any / relevant to study area	IELTS 6.0 (minimum subscore 5.5) or equivalent Minimum of 60% average overall	<ul style="list-style-type: none"> • BSc Accounting and Finance • BSc Business Management • BA Media and Communication • LLB Business Law • BA Politics
	IELTS 6.0 (minimum subscore 5.5) or equivalent Minimum of 60% average overall incl. 60% in Further Maths	<ul style="list-style-type: none"> • BEng Aerospace Engineering • BEng Chemical Engineering • BEng Civil Engineering • BEng Electrical & Electronic Engineering • BEng Mechanical Engineering • BEng Medical Engineering
	IELTS 6.0 (minimum subscore 5.5) or equivalent Minimum of 60% average overall incl. 60% in Further Maths or any Science module	<ul style="list-style-type: none"> • BSc Sport and Exercise Science
	IELTS 6.0 (minimum subscore 5.5) or equivalent Minimum of 60% average overall with a min. of Merit in Further Maths & no failed modules	<ul style="list-style-type: none"> • BSc Computer Science • BSc Mathematics

Swinburne University of Technology Australia

www.swinburne.edu.au
www.swinburne.edu.au/study/options/connect/

L3IFDHES	Entry Requirements	Year 1 Entry to
	IELTS score of 5.5 (no individual band less than 5.0) Minimum 40% overall <i>*Arrangement is limited to student flow from China and Indonesia only</i>	<ul style="list-style-type: none"> • UniLink Diploma of Business • UniLink Diploma of IT • UniLink Diploma of Engineering • UniLink Diploma of Health Science • UniLink Diploma of Arts and Communication
	IELTS score of 5.5 (no individual band less than 5.0) Minimum 40% overall and Further Mathematics <i>*Arrangement is limited to student flow from China and Indonesia only</i>	<ul style="list-style-type: none"> • UniLink Diploma of Science

Teesside University England

www.tees.ac.uk
sse-admissions@tees.ac.uk

L3IFDHES	Entry Requirements	Year 1 Entry to
Any / relevant to study area	IELTS 5.5 or higher in each band Overall average of 40% (Pass) with a MERIT in Foundation Mathematics	<ul style="list-style-type: none"> • BSc (Hons) Crime Scene Science • BSc (Hons) Computer and Digital Forensics
	IELTS 5.5 or higher in each band Overall average of 40% (Pass) with at least a MERIT in Foundation Mathematics - any electives	<ul style="list-style-type: none"> • BEng (Hons) Aerospace Engineering (extended with integrated foundation year) • BEng (Hons) Chemical Engineering (extended with integrated foundation year) • BEng (Hons) Civil Engineering (extended with integrated foundation year) • BEng (Hons) Electrical and Electronic Engineering (extended with integrated foundation year) • BEng (Hons) Instrumentation and Control Engineering (extended with integrated foundation year) • BEng (Hons) Mechanical Engineering (extended with integrated foundation year) • BSc (Hons) Biological Science (extended with integrated foundation year) • BSc (Hons) Biomedical Science (extended with integrated foundation year) • BSc (Hons) Computer and Digital Forensics (extended with integrated foundation year)

Teesside University England

www.tees.ac.uk
sse-admissions@tees.ac.uk

L3IFDHES	Entry Requirements	Year 1 Entry to
Any / relevant to study area	<p>IELTS 5.5 or higher in each band</p> <p>Overall average of 40% (Pass) with at least a MERIT in Foundation Mathematics - any electives</p>	<ul style="list-style-type: none"> BSc (Hons) Crime Scene Science (extended with integrated foundation year) BSc (Hons) Environmental Science (extended with integrated foundation year) BSc (Hons) Food and Nutrition (extended with integrated foundation year) BSc (Hons) Food Science and Engineering (extended with integrated foundation year) BSc (Hons) Forensic Science (extended with integrated foundation year) BSc (Hons) Human Biology (extended with integrated foundation year)
Engineering	<p>IELTS 5.5 or higher in each band</p> <p>Overall average of 40% (Pass) with at least a MERIT in Engineering Electives (Further Mathematics and Physics)</p>	<ul style="list-style-type: none"> BEng (Hons) Aerospace Engineering BEng (Hons) Aerospace Engineering with Industry BEng (Hons) Civil Engineering BEng (Hons) Civil Engineering with Industry BEng (Hons) Electrical and Electronic Engineering BEng (Hons) Electrical and Electronic Engineering with Industry BEng (Hons) Instrumentation and Control Engineering BEng (Hons) Instrumentation and Control Engineering with Industry BEng (Hons) Mechanical Engineering with Industry
	<p>IELTS 5.5 or higher in each band</p> <p>Overall average of 40% (Pass) with at least a MERIT in Engineering Electives (Further Mathematics and Physics), requires evidence of study of Chemistry at Level 3 / higher</p>	<ul style="list-style-type: none"> BEng (Hons) Chemical Engineering BEng (Hons) Chemical Engineering with Industry

Teesside University England

www.tees.ac.uk
sse-admissions@tees.ac.uk

L3IFDHES	Entry Requirements	Year 1 Entry to
Engineering	<p>IELTS 5.5 or higher in each band</p> <p>Overall average of 40% (Pass) with a DISTINCTION in the Engineering Electives (Further Mathematics and Physics)</p>	<ul style="list-style-type: none"> MEng (Hons) Aerospace Engineering - 4-year degree MEng (Hons) Aerospace Engineering with Industry - 5-year degree MEng (Hons) Civil Engineering - 4-year degree MEng (Hons) Civil Engineering with Industry - 5-year degree MEng (Hons) Civil Engineering with Disaster Management - 4-year degree MEng (Hons) Civil Engineering with Disaster Management with Industry - 5-year degree MEng (Hons) Electrical and Electronic Engineering - 4-year degree MEng (Hons) Electrical and Electronic Engineering with Industry - 5-year degree MEng (Hons) Instrumentation and Control Engineering - 4-year degree MEng (Hons) Instrumentation and Control Engineering with Industry - 5-year degree MEng (Hons) Mechanical Engineering with Industry - 5-year degree
	<p>IELTS 5.5 or higher in each band</p> <p>Overall average of 40% (Pass) with a DISTINCTION in the Engineering Electives (Further Mathematics and Physics), requires evidence of study of Chemistry at Level 3/ higher</p>	<ul style="list-style-type: none"> MEng (Hons) Chemical Engineering - 4-year degree MEng (Hons) Chemical Engineering with Industry - 5-year degree
	<p>IELTS 5.5 or higher in each band</p> <p>Overall average of 40% (Pass) with a MERIT in Foundation Maths</p>	<ul style="list-style-type: none"> BSc (Hons) Environmental Science

Temple University USA

www.temple.edu
international.admissions@temple.edu

L3IFDHES	Entry Requirements	Year 1 Entry to
Any / relevant to study area	<p>Minimum IELTS score of 6.0+ in Computer Science major and minimum IELTS score of 6.5+ in a Business major. For other majors, please check university website.</p> <p>Minimum 60% average overall mark in L3IFDHES + successful completion of high school or equivalent with overall 2.7+ GPA</p>	<ul style="list-style-type: none"> Accounting Actuarial Science Business Management Economics Entrepreneurship and Innovation Management Finance Financial Planning Human Resource Management International Business Legal Studies Management Information Systems Marketing Real Estate Risk Management and Insurance Statistical Science and Data Analysis Supply Chain Management Sport and Recreation Management Tourism and Hospitality Management Advertising Communication and Social Influence Communication Studies Journalism Media Studies and Production Public Relations Film and Media Arts Criminal Justice Global Studies Philosophy Psychology Political Science Sociology Applied Mathematics Biochemistry Biology Biophysics Chemistry Computer Science Computer Science and Physics Data Science Environmental Science Geology Information Science and Technology Mathematical Economics Mathematics Mathematics and Computer Science Mathematics and Physics Natural Sciences Neuroscience: Cellular and Molecular Physics

Temple University USA

www.temple.edu
international.admissions@temple.edu

L3IFDHES	Entry Requirements	Year 1 Entry to
Any / relevant to study area	<p>Minimum IELTS score of 6.0+ in Computer Science major and minimum IELTS score of 6.5+ in a Business major. For other majors, please check university website.</p> <p>Minimum 60% average overall mark in L3IFDHES + successful completion of high school or equivalent with overall 2.7+ GPA</p>	<ul style="list-style-type: none"> Pre-Pharmacy Exercise and Sport Science Health Information Management Health Professions Kinesiology Nursing Pre-Health Information Management Public Health Recreational Therapy Speech, Language and Hearing Science Social Work Bioengineering Civil Engineering Construction Engineering Technology Electrical Engineering Engineering Engineering Technology Environmental Engineering Industrial and Systems Engineering Mechanical Engineering

Temple University Japan Campus (TUJ) Japan

www.tuj.ac.jp
ac@tuj.temple.edu

L3IFDHES	Entry Requirements	Year 1 Entry to
Any / relevant to study area	<p>Please find up-to-date information at https://www.tuj.ac.jp/ug/admissions/qualifications.html</p> <p>Applications will be considered on a case-by-case basis</p>	<ul style="list-style-type: none"> Undergraduate programmes

The University of Queensland Australia

[www.uq.edu.au](https://future-students.uq.edu.au/contact-us/international-online-enquiries)
[https://future-students.uq.edu.au/contact-us/
international-online-enquiries](https://future-students.uq.edu.au/contact-us/international-online-enquiries)

L3IFDHES	Entry Requirements	Year 1 Entry to
Any / relevant to study area	<p>The necessary English language proficiency requirements are available on the UQ website: https://ppl.app.uq.edu.au/content/3.40.14-english-language-proficiency-admission, or https://my.uq.edu.au/programs-courses/</p> <p>Students will be required to have completed their NCC L3IFDHES in one year (equivalent to two semesters) of full-time study, and must meet any other pre-requisites set by the UQ.</p> <p>Applications will be considered on an individual basis.</p>	<ul style="list-style-type: none"> The University of Queensland (UQ) will consider students for entry to the first year of undergraduate programmes with a Selection Rank of 88 and below. Selection ranks can change year-on-year and meeting the selection rank threshold does not guarantee admission. A University of Selection Rank of 88 is deemed equivalent to 90% in the L3IFDHES. To check the selection rank of your preferred course, please visit the UQ website: https://my.uq.edu.au/programs-courses/

Thompson Rivers University Canada

www.tru.ca
admissions@tru.ca

L3IFDHES	Entry Requirements	Year 1 Entry to
Any / relevant to study area	<p>Contact office for details</p> <p>Overall average of 40% (Pass)</p>	<ul style="list-style-type: none"> Bachelors of Arts, BA Bachelor of Business Administration, BBA Bachelor of Computing Science, BSc Bachelor of Fine Arts, BFA Bachelor of Health Science, BHS Associate of Arts Degree Bachelor of Interdisciplinary Studies, BIS Bachelor of Natural Resource Science, BNR Bachelor of Science, BSc Bachelor of Science in Nursing, BSN Bachelor of Tourism Management, BTM



The University of Queensland is ranked #3 in Australia and #53 in the world (Times Higher Education World University Rankings 2023)

Xianya Qi

Leaving home and studying in a different city really cultivated my ability to live independently, and I gained so much knowledge about academic English, paper writing, business and accounting. These experiences will help me to adapt to life at university and study well.

- Level 3 International Foundation Diploma for Higher Education Studies
- Accepted onto Bachelor of Arts in Psychology at The University of Queensland



Turin Polytechnic University in Tashkent

Uzbekistan

www.polito.uz
admission@polito.uz

L3IFDHES	Entry Requirements	Year 1 Entry to
Engineering	<p>IELTS 6.0 Overall or higher (no band less than 5.5)</p> <p>Overall average of 50%, including minimum 45% in Physics and Further Mathematics</p>	<ul style="list-style-type: none"> BSc Information Technologies and Programming in Industry BSc Industrial and Civil Engineering and Architecture
	<p>IELTS 6.0 Overall or higher (no band less than 5.5)</p> <p>Overall average of 50%, including minimum 55% in Physics and Further Mathematics</p>	<ul style="list-style-type: none"> BSc Automotive Engineering BSc Mechanical Engineering BSc Management and Industrial Engineering

University Canada West

Canada

www.ucanwest.ca
info@ucanwest.ca

L3IFDHES	Entry Requirements	Year 1 Entry to
Any / relevant to study area	<p>IELTS score of 6.5 or better with a minimum of 6.0 in the writing band, or equivalent</p> <p>All applications will be considered on a case-by-case basis</p>	<ul style="list-style-type: none"> Bachelor of Commerce (Bcom)

University Centre Croydon

England

www.uca.ac.uk
international@croydon.ac.uk

L3IFDHES	Entry Requirements	Year 1 Entry to
Business	<p>IELTS 6.0 (no band less than 5.5)</p> <p>Overall average of 40% Minimum grade of C in GSCE English and Mathematics (or its recognised international equivalent)</p>	<ul style="list-style-type: none"> BA (Hons) Business and Management awarded by the University of Sussex BA (Hons) Criminology, Psychology and Social Justice awarded by the University of Sussex BA (Hons) Early Childhood Studies awarded by the University of Sussex

University for the Creative Arts

England

www.uca.ac.uk
internationaladmissions@uca.ac.uk

L3IFDHES	Entry Requirements	Year 1 Entry to
Business	<p>IELTS 6.0 with each component 5.5 or above. Pre-sessional courses available for students with lower IELTS score. Contact university for more details.</p> <p>Average score of 60% or above</p>	<ul style="list-style-type: none"> BA / BSc (Hons) Advertising BA / BSc (Hons) Arts & Festivals Management BA / BSc (Hons) Business Management BA / BSc (Hons) Digital Marketing & Social Media BA / BSc (Hons) Event & Promotions Management BA / BSc (Hons) Retail & Experience Management BSc (Hons) Fashion Business & Management BSc (Hons) International Buying & Merchandising BSc (Hons) Music Business & Management

University of Bedfordshire England

www.beds.ac.uk
international@beds.ac.uk

L3IFDHES	Entry Requirements	Year 1 Entry to
Any / relevant to study area	<p>IELTS of 6.0 overall with a minimum of 5.5 in each band, or equivalent</p> <p>Minimum overall pass of 50% with no failed modules</p>	<ul style="list-style-type: none"> BA (Hons) Social Studies BA (Hons) Criminology BA (Hons) Criminology and Sociology BA (Hons) Health and Social Care BA (Hons) Child and Adolescent Studies BA (Hons) Professional Policing
Business	<p>IELTS of 6.0 overall with a minimum of 5.5 in each band, or equivalent</p> <p>Minimum overall pass of 50% with no failed modules</p>	<ul style="list-style-type: none"> BA (Hons) Accounting BSc (Hons) Accounting and Finance BSc (Hons) Economics and Finance BSc (Hons) Business Economics BSc (Hons) International Banking and Finance BSc (Hons) Human Resource Management BSc (Hons) Business Management BSc (Hons) Business Studies BSc (Hons) Business Studies with Finance BSc (Hons) Business Studies with Marketing BSc (Hons) Aviation and Airport Management BSc (Hons) Marketing BSc (Hons) International Business BSc (Hons) International Tourism Management BSc (Hons) Travel, Aviation and Tourism Management BSc (Hons) International Tourism with Hospitality Management BSc (Hons) Events Management LLB (Hons) Law
Computing	<p>IELTS of 6.0 overall with a minimum of 5.5 in each band, or equivalent</p> <p>Minimum overall pass of 50% with no failed modules</p>	<ul style="list-style-type: none"> BSc (Hons) Artificial Intelligence and Robotics BEng (Hons) Automotive Engineering BSc (Hons) Business Information Systems BSc (Hons) Computer Animation and Visual Effects BSc (Hons) Computer Games Development BSc (Hons) Computer Networking BSc (Hons) Computer Science BSc (Hons) Cybersecurity BEng (Hons) Electronic Engineering BSc (Hons) Information and Data Systems BSc (Hons) Information Technology BEng (Hons) Mechanical Engineering BSc (Hons) Product Design BSc (Hons) Software Engineering BSc (Hons) Telecommunications and Network Engineering

THE WORLD'S FASTEST RISING UNIVERSITY* IN AUSTRALIA'S MOST PROGRESSIVE CITY.

That's momentum and that's your path for success.



University of Canberra Australia

www.canberra.edu.au
international@canberra.edu.au

L3IFDHES	Entry Requirements	Year 1 Entry to
Any / relevant to study area	<p>Overall 6.0 (no band less than 6.0)</p> <p>Minimum 60% overall in NCC IFD. Use the University of Canberra Selection Rank / NCC IFD Conversion Table.</p>	<ul style="list-style-type: none"> Bachelor of Business (Entrepreneurship & Innovation) Bachelor of Business (Human Resource Management) Bachelor of Business (International Business) Bachelor of Business (Management) Bachelor of Business (Marketing) Bachelor of Business (Service Management) Bachelor of Business / Bachelor of Communication and Media Bachelor of Business / Bachelor of Design Bachelor of Business / Bachelor of Information Technology Bachelor of Business / Bachelor of Science in Psychology Bachelor of Justice Studies / Bachelor of Forensic Studies Bachelor of Social & Economic Policy (Sociology) Bachelor of Arts (Culture & Heritage) Bachelor of Arts (Digital Media) Bachelor of Arts (Film Production) Bachelor of Arts (Global Studies) Bachelor of Building and Construction Management Bachelor of Communication and Media (Corporate and Public Communication) Bachelor of Communication and Media (Journalism) Bachelor of Communication and Media (Marketing Communication) Bachelor of Communication and Media (Sports Media) Bachelor of Design (Industrial Design) Bachelor of Design (Interaction Design) Bachelor of Design (Visual Communication Design) Bachelor of Design / Bachelor of Communication and Media Bachelor of The Built Environment (Architecture) Bachelor of The Built Environment (Interior Architecture) Bachelor of The Built Environment (Landscape Architecture) Bachelor of Applied Science in Forensic Studies Bachelor of Biomedical Science Bachelor of Business Informatics Bachelor of Network & Software Engineering Bachelor of Environmental Science Bachelor of Information Technology Bachelor of Medical Science Bachelor of Science Bachelor of Software Engineering Bachelor of Software Engineering / Bachelor of Business Informatics Bachelor of Engineering (Honours) Bachelor of Health Science (Human Movement) / Bachelor of Human Nutrition Bachelor of Human Nutrition Bachelor of Science in Psychology Bachelor of Science in Psychology / Bachelor of Health Science (Human Movement) Bachelor of Health Science (Nutrition Studies) Bachelor of Sport and Exercise Science

University of Canberra Australia

www.canberra.edu.au
international@canberra.edu.au

L3IFDHES	Entry Requirements	Year 1 Entry to
Any / relevant to study area	<p>Overall 6.0 (no band less than 6.0)</p> <p>Minimum 65% overall in NCC IFD. Use the University of Canberra Selection Rank / NCC IFD Conversion Table.</p>	<ul style="list-style-type: none"> Bachelor of Accounting Bachelor of Business / Bachelor of Business Informatics Bachelor of Commerce (Accounting and Finance) Bachelor of Commerce (Accounting) Bachelor of Commerce (Business Economics) Bachelor of Commerce (Finance and Banking) Bachelor of Commerce (Financial Planning) Bachelor of Commerce / Bachelor of Information Technology Bachelor of Event and Tourism Management Bachelor of Justice Studies Bachelor of Politics & International Relations / Bachelor of Design Bachelor of Politics & International Relations / Bachelor of Science (Psychology) Bachelor of Politics & International Relations / Bachelor of Business Bachelor of Politics & International Relations / Bachelor of Communication and Media Bachelor of Communication and Media / Bachelor of Event and Tourism Management
	<p>Overall 6.0 (no band less than 6.0)</p> <p>Minimum 72% overall in NCC IFD. Use the University of Canberra Selection Rank / NCC IFD Conversion Table.</p>	<ul style="list-style-type: none"> Bachelor of Vision Science
	<p>Overall 6.0 (reading and writing no less than 7.0)</p> <p>Minimum 60% overall in NCC IFD. Use the University of Canberra Selection Rank / NCC IFD Conversion Table.</p>	<ul style="list-style-type: none"> Bachelor of Business / Bachelor of Arts Bachelor of Arts (Creative Writing) Bachelor of Arts / Bachelor of Communication and Media Bachelor of Arts / Bachelor of Science in Psychology
	<p>Overall 6.0 (reading and writing no less than 7.0)</p> <p>Minimum 72% overall in NCC IFD. Use the University of Canberra Selection Rank / NCC IFD Conversion Table.</p>	<ul style="list-style-type: none"> Bachelor of Arts / Bachelor of Laws

University of Canberra Australia

www.canberra.edu.au
international@canberra.edu.au

L3IFDHES	Entry Requirements	Year 1 Entry to
Any / relevant to study area	Overall 6.5 (no band less than 6.0) Minimum 72% overall in NCC IFD. Use the University of Canberra Selection Rank / NCC IFD Conversion Table.	<ul style="list-style-type: none"> Bachelor of Business / Bachelor of Laws Bachelor of Commerce / Bachelor of Laws Bachelor of Laws Bachelor of Laws / Bachelor of Design Bachelor of Politics & International Relations / Bachelor of Laws Bachelor of Communication and Media / Bachelor of Event and Tourism Management Bachelor of Science in Psychology / Bachelor of Laws Bachelor of Science / Bachelor of Laws Bachelor of Forensic Studies / Bachelor of Laws
	Overall 7.0 High Achievement and other criteria	<ul style="list-style-type: none"> Bachelor of Midwifery
	Overall 7.0 (no band less than 7.0) High Achievement	<ul style="list-style-type: none"> Bachelor of Physiotherapy
	Overall 7.0 (no band less than 7.0) Minimum 65% overall in NCC IFD. Use the University of Canberra Selection Rank / NCC IFD Conversion Table.	<ul style="list-style-type: none"> Bachelor of Nursing
	Overall 7.0 (no band less than 7.0) Minimum 72% overall in NCC IFD. Use the University of Canberra Selection Rank / NCC IFD Conversion Table.	<ul style="list-style-type: none"> Bachelor of Medical Radiation Science (Medical Imaging) Bachelor of Nursing Advanced Bachelor of Physiology and Rehabilitation Bachelor of Occupational Therapy Bachelor of Pharmacy
	Overall 7.5 (no band less than 7.0, speaking and listening no less than 8.0) Minimum 60% overall in NCC IFD. Use the University of Canberra Selection Rank / NCC IFD Conversion Table.	<ul style="list-style-type: none"> Bachelor of Early Childhood and Primary Education Bachelor of Primary Education Bachelor of Primary Education (Creative Arts) Bachelor of Primary Education (Health and Physical Education) Bachelor of Primary Education (STEM) Bachelor of Secondary Education (Health and Physical Education) Bachelor of Secondary Education / Bachelor of Arts Bachelor of Secondary Education / Bachelor of Mathematics and Computing Technology Studies Bachelor of Secondary Education / Bachelor of Science

University of Central Lancashire England

www.uclan.ac.uk
international@uclan.ac.uk

L3IFDHES	Entry Requirements	Year 1 Entry to
Business	IELTS 6.0 (no band less than 5.5) Overall average of 50% or above	<ul style="list-style-type: none"> BA (Hons) Business and Management BA (Hons) International Business BA (Hons) Business and Marketing BA (Hons) Marketing BA (Hons) Digital Marketing BA (Hons) International Tourism Management BA (Hons) International Hospitality Management BA (Hons) Event Management
	IELTS 6.0 (no band less than 5.5) Overall average of 55% and above	<ul style="list-style-type: none"> BA (Hons) Accounting and Finance BA (Hons) Accounting and Financial Studies BSc (Hons) Sport Business Management
Computing	IELTS 6.0 (no band less than 5.5) Overall average of 55%, 50% in Foundation Mathematics	<ul style="list-style-type: none"> BSc (Hons) Computing MComp Computer Games Development (4-year programme leading to integrated Masters) BSc (Hons) Computer Games Development BSc (Hons) Forensic Computing and Security BSc (Hons) Software Engineering BSc (Hons) Computer Networks and Security
No specific electives required	Overall average of 50% including 50% in Electives and Foundation Maths. Further Maths and Physics electives preferred but not essential. IGCSE Maths grade C or equivalent	<ul style="list-style-type: none"> BSc (Hons) Building Surveying BSc (Hons) Construction Project Management BSc (Hons) Facilities Management BSc (Hons) Fire and Leadership Studies BSc (Hons) Fire Safety and Risk Management BSc (Hons) Quantity Surveying
	40% or above in all Core and Elective Units. Further Maths and Chemistry or Maths Electives preferred but not essential. IGCSE Maths grade C or equivalent	<ul style="list-style-type: none"> FdSc Fire Safety Engineering

University of Central Lancashire England

www.uclan.ac.uk
international@uclan.ac.uk

L3IFDHES	Entry Requirements	Year 1 Entry to
Engineering	<p>Overall average of 50% including 50% or above in Further Maths and Physics and Foundation Maths</p> <p>IGCSE Grade C in Mathematics or equivalent</p>	<ul style="list-style-type: none"> • BEng Building Services & Sustainable Eng • BEng Civil Engineering • BEng Civil Engineering and Construction Management • BEng / MEng Computer-Aided Engineering • BEng Electrical and Electronic Engineering • BEng / MEng Electronic Engineering • BEng / MEng Energy Engineering • BEng / MEng Fire Engineering • BEng / MEng Manufacturing Engineering • BEng / MEng Mechanical Engineering • BEng Mechatronics and Intelligent Machines • BEng / MEng Motorsports Engineering • BEng Nuclear Engineering Sciences • BEng / MEng Oil and Gas Safety Engineering • BEng / MEng Robotics Engineering
	<p>Overall average of 60% including 60% or above from Further Maths and Physics Electives and Foundation Maths</p> <p>IGCSE Grade C in Mathematics or equivalent</p>	<ul style="list-style-type: none"> • BEng / MEng Aerospace Engineering • BEng / MEng Aerospace Engineering with Industrial Placement • BEng / MEng Aerospace Engineering with Pilot Studies • MEng Civil Engineering

MAKE DERBY YOUR CHOICE OF STUDY

Why choose the University of Derby?


The University of Derby is an ambitious, innovative and modern university offering a real world learning experience which is of the highest standard.


Renowned for delivering industry-relevant degrees in


- Design and Art
- Fashion
- Drama
- Engineering
- Tourism and Hospitality
- International Business
- Economics and Finance
- Sciences
- International Nursing
- Counselling
- Art, Dance, Drama Therapy

Find out more about the University of Derby:

derby.ac.uk

 @DerbyUni

 University of Derby – International

 University of Derby

Guaranteed progression for NCC Education students.



In partnership with



derby.ac.uk

University of Derby England

www.derby.ac.uk
www.derby.ac.uk/life/international-students

L3IFDHEs	Entry Requirements	Year 1 Entry to
Business	<p>IELTS 6.0 OR Pass DELS and AELS at 60% (no band less than 5.5)</p> <p>Overall average of 60% Merit and above</p>	<ul style="list-style-type: none"> BA (Hons) Business Management (CMI accredited) BA (Hons) Business Management (Enterprise) BA (Hons) Business Management (Finance) BA (Hons) Business Management (HRM) BA (Hons) Business Management (International Business) BA (Hons) Business Management (Marketing) BA (Hons) Business Studies BSc (Hons) Logistics and Supply Chain Management BA (Hons) International Business BA (Hons) International Business and Finance BSc (Hons) Finance BSc (Hons) Economics and Finance BA (Hons) Accounting and Finance BA (Hons) Business Accounting and Finance BSc (Hons) Marketing (Consumer Psychology) BSc (Hons) Marketing (Digital) BA (Hons) Marketing (PR and Advertising) BA (Hons) International Tourism Management BA (Hons) International Hospitality Management BA (Hons) Event Management BA (Hons) Professional Culinary Management LLB (Hons) Law LLB (Hons) Law with Criminology
Computing	<p>IELTS 6.0 OR Pass DELS and AELS at 60% (no band less than 5.5)</p> <p>Overall average of 60% (Merit)</p>	<ul style="list-style-type: none"> BSc (Hons) Sound, Light and Live Event Technology BSc (Hons) Digital Forensics and Security BSc (Hons) Computer Games Programming BSc (Hons) Computer Science BSc (Hons) Computer Networks and Security BSc (Hons) Cyber Security BSc (Hons) Data Science BSc (Hons) Information Technology BEng (Hons) Computer Network Engineering BA (Hons) Computer Games Modelling and Animation BSc (Hons) Quantity Surveying and Commercial Management BSc (Hons) Construction Management and Property Development



University of
East London



Waterfront Housing

One of the only universities in London with en-suite housing on campus



Education Resources

Free books for the entire degree and access to Skills Zone



Athletics

Home to Olympians and a £21 million sports facility

University of East London England

www.uel.ac.uk
international@uel.ac.uk

L3IFDHES	Entry Requirements	Year 1 Entry to
Any / relevant to study area	The English language requirements for undergraduate (Bachelor) courses is a minimum IELTS score of 5.5 or 6, or equivalent, depending on the course and year or level of entry. For details, please check course page on university website.	<ul style="list-style-type: none"> BSc (Hons) Business Management BSc (Hons) Economics BSc (Hons) Economics (FinTech pathway) BSc (Hons) Human Resource Management BSc (Hons) Marketing BSc (Hons) Marketing Data Analytics
	Overall average of 50%, with no less than 40% in any module	
	The English language requirements for undergraduate (Bachelor) courses is a minimum IELTS score of 5.5 or 6, or equivalent, depending on the course and year or level of entry. For details, please check course page on university website.	<ul style="list-style-type: none"> BA (Hons) Sports Journalism
	Minimum 60% in all modules and to meet English language requirements	
Business or Finance	The English language requirements for undergraduate (Bachelor) courses is a minimum IELTS score of 5.5 or 6, or equivalent, depending on the course and year or level of entry. For details, please check course page on university website.	<ul style="list-style-type: none"> BSc (Hons) Accounting & Finance BSc (Hons) Accounting & Finance (FinTech pathway)
	Overall average of 50%, with no less than 40% in any module and at least 60% in Foundation Mathematics	

University of East London England

www.uel.ac.uk
international@uel.ac.uk

L3IFDHES	Entry Requirements	Year 1 Entry to
Computing	The English language requirements for undergraduate (Bachelor) courses is a minimum IELTS score of 5.5 or 6, or equivalent, depending on the course and year or level of entry. For details, please check course page on university website.	<ul style="list-style-type: none"> BSc (Hons) Computer Science BSc (Hons) Cloud Computing BSc (Hons) Computing for Business BSc (Hons) Cyber Security Networks BSc (Hons) Data Science and Artificial Intelligence
	Overall average of 40%, including Computing elective units Introduction to Computer Science and Introduction to Programming	
Engineering	The English language requirements for undergraduate (Bachelor) courses is a minimum IELTS score of 5.5 or 6, or equivalent, depending on the course and year or level of entry. For details, please check course page on university website.	<ul style="list-style-type: none"> Bachelor of Engineering Biomedical Engineering Bachelor of Engineering Civil Engineering Bachelor of Engineering General Engineering Bachelor of Engineering Mechanical Engineering Bachelor of Engineering Mechatronics and Computer Systems Engineering Bachelor of Engineering Mechatronics Engineering Bachelor of Engineering Product Design Engineering Bachelor of Engineering Railway Engineering Bachelor of Science Civil Engineering Foundation Degree of Science Civil Engineering and Construction Management Bachelor of Engineering Engineering Management Bachelor of Science Construction Management Bachelor of Science Quantity Surveying and Commercial Management Bachelor of Science Surveying and Mapping Sciences
	Overall average of 40%, including Engineering elective units Further Mathematics and Physics	

University of East London England

www.uel.ac.uk
international@uel.ac.uk

L3IFDHES	Entry Requirements	Year 1 Entry to
Health Science	The English language requirements for undergraduate (Bachelor) courses is a minimum IELTS score of 5.5 or 6, or equivalent, depending on the course and year or level of entry. For details, please check course page on university website.	<ul style="list-style-type: none"> BSc (Hons) Sport and Exercise Science BSc (Hons) Sport Physical Education and Development BSc (Hons) Sports Therapy
	Minimum 60% in all modules, including Biology	
	The English language requirements for undergraduate (Bachelor) courses is a minimum IELTS score of 5.5 or 6, or equivalent, depending on the course and year or level of entry. For details, please check course page on university website.	<ul style="list-style-type: none"> BSc (Hons) Physiotherapy
	Overall average of 70%, with at least 70% in Biology and Chemistry. Applications will be considered on their own merits and a short-listing process for interviews will take place. The interview will focus on communication skills and insight into the physiotherapy profession within the NHS setting. GCSE Maths grade 4 or equivalent is also required.	

University of Essex England

www.essex.ac.uk
admit@essex.ac.uk

L3IFDHES	Entry Requirements	Year 1 Entry to
Any / relevant to study area	IELTS 6.0 overall Overall 60% Merit with minimum 60% in both elective stream units	<ul style="list-style-type: none"> BSc Psychology with Economics
	IELTS 6.0 overall Overall 65% Merit with minimum 65% in both elective stream units	<ul style="list-style-type: none"> BA Psychology BSc Psychology
Business	IELTS 6.0 overall Overall 65% Merit with minimum 65% in both elective stream units	<ul style="list-style-type: none"> BBA Business Administration BA Business Economics BSc Business Management BA Business Management and Modern Languages BSc International Business and Entrepreneurship LLB Law with Business BSc Management and Marketing BSc Marketing
Computing	IELTS 6.0 overall Overall 65% Merit with minimum 65% in both elective stream units	<ul style="list-style-type: none"> BSc Computer Games BSc Computer Science BEng Computer Networks
Engineering	IELTS 6.0 overall Overall 65% Merit with minimum 65% in both elective stream units	<ul style="list-style-type: none"> BEng Electronic Engineering BEng Communications Engineering BEng Robotic Engineering BEng Mechatronic Systems BEng Computers with Electronics BEng Computer Systems Engineering BEng Neural Engineering with Psychology
Finance	IELTS 6.0 overall Overall 65% Merit with minimum 65% in both elective stream units	<ul style="list-style-type: none"> BSc Accounting BSc Accounting and Finance BSc Accounting and Management BSc Accounting with Economics BSc Banking and Finance BSc Finance BSc Finance and Management BA Financial Economics and Accounting LLB Law with Finance

University of Essex England

www.essex.ac.uk
admit@essex.ac.uk

L3IFDHES	Entry Requirements	Year 1 Entry to
Health Sciences	IELTS 6.0 overall Overall 60% Merit with minimum 60% in both elective stream units	<ul style="list-style-type: none"> BSc Biochemistry BSc Genetics BSc Human Biology BSc Biological Sciences BSc Marine Biology BSc Biomedical Science
	IELTS 7.0 overall with a minimum of 6.5 in each component (or equivalent) Overall 60% Merit with minimum 60% in both elective stream units	<ul style="list-style-type: none"> BSc Occupational Therapy
	IELTS 7.0 overall, with 6.5 in writing, and 7.0 in all other components Overall 60% Merit with minimum 60% in both elective stream units	<ul style="list-style-type: none"> BSc Nursing (Adult) BSc Nursing (Mental Health)
	IELTS 8.0 overall with a minimum of 7.5 in each component (or equivalent) Overall 65% Merit with minimum 65% in both elective stream units	<ul style="list-style-type: none"> BSc Speech and Language Therapy

University of Exeter England

www.exeter.ac.uk
www.exeter.ac.uk/international/contactus/

L3IFDHES	Entry Requirements	Year 1 Entry to
Chemical Engineering/ Engineering	At least 6.5 overall and no less than 6.0 in the writing section and no less than 5.5 in any other section Distinction overall, with a Distinction in 'Further Mathematics' and Science. No academic module less than a Merit	<ul style="list-style-type: none"> BSc / MGeol Applied Geology BSc / MGeol Engineering Geology and Geotechnics BEng / MEng Renewable Energy Engineering
	At least 6.5 overall and no less than 6.0 in the writing section and no less than 5.5 in any other section Distinction overall, with a Distinction in a Science. No academic module less than a Merit	<ul style="list-style-type: none"> BEng / MEng Civil Engineering BEng / MEng Electronic Engineering BEng / MEng Engineering BEng / MEng Engineering and Management BEng / MEng Mechanical Engineering BEng / MEng Mining Engineering BSc Renewable Energy BEng / MEng Engineering and Entrepreneurship

University of Gloucestershire England

www.glos.ac.uk/Pages/default.aspx
www.glos.ac.uk/study/international/pages/meet-the-team.aspx

L3IFDHES	Entry Requirements	Year 1 Entry to
Any / relevant to study area	IELTS 6.0 overall with no less than 5.5 in any band Minimum 40% overall	<ul style="list-style-type: none"> All undergraduate programmes

University of Greenwich England

www.greenwich.ac.uk
gre.ac.uk/international

L3IFDHES	Entry Requirements	Year 1 Entry to
Business	IELTS 6.0 (no band less than 5.5) Overall average of 40% (Pass)	<ul style="list-style-type: none"> BA (Hons) Business Economics BA (Hons) Business with Finance BSc (Hons) Economics BA (Hons) International Business BA (Hons) International Business with Language BA (Hons) Accounting and Finance BA (Hons) Accounting and Financial Information Systems BSc (Hons) Finance and Investment Banking BA (Hons) Business Management BA (Hons) Human Resource Management BA (Hons) Advertising and Digital Marketing Communications BA (Hons) Events Management BA (Hons) Hospitality Management BA (Hons) Marketing Management BA (Hons) Marketing Management with language BA (Hons) Public Relations and Communications BA (Hons) Tourism Management BA (Hons) Tourism Management with Language
Computing	IELTS 6.0 (no band less than 5.5) Overall average of 40% (Pass)	<ul style="list-style-type: none"> BSc (Hons) Business Computing BSc (Hons) Business Information Technology BSc (Hons) Computer Science BSc (Hons) Computer Security and Forensics BSc (Hons) Computing BSc (Hons) Digital Media Design and Development BSc (Hons) Games Design and Development BEng (Hons) Software Engineering
Engineering	IELTS 6.0 (no band less than 5.5) Overall average of 40% (Pass)	<ul style="list-style-type: none"> BEng (Hons) Design, Innovation & Entrepreneurship BEng (Hons) Engineering Management BEng (Hons) Civil Engineering BEng (Hons) Computer Engineering BEng (Hons) Cybernetics BEng (Hons) Electrical and Electronic Engineering BEng (Hons) Engineering Technology BEng (Hons) Mechanical Engineering
Health Sciences	IELTS 6.0 (no band less than 5.5) Overall average of 50% (Merit) IELTS 6.0 (no band less than 5.5) Overall average of 50% (Merit) * also requires an interview	<ul style="list-style-type: none"> BSc (Hons) Pharmaceutical Sciences BSc (Hons) Human Nutrition BSc (Hons) Sports Science <ul style="list-style-type: none"> BSc (Hons) Sport Science with Coaching BSc (Hons) Sport Science with Professional Football Coaching

University of Idaho USA

www.idaho.edu
ipo@idaho.edu

L3IFDHES	Entry Requirements	Year 1 Entry to
Any / relevant to study area	IELTS 6.0 (or equivalent) Overall average of 40% (Pass)	<ul style="list-style-type: none"> Accounting (BS) Advertising (BA / BS) Agricultural Economics: Agribusiness (BA / BS) Agricultural Economics (BS) Agricultural Education (BS) Agricultural Systems Management (BS) Anthropology (BA / BS) Architecture (BS) Art (BA) Biochemistry (BS) Biological Engineering (BS) Environmental Science (BS) Biology (BA / BS) Chemical Engineering (BS) Civil Engineering (BS) Computer Engineering (BS) Computer Science (BS) Dance (BS) Business Economics (BA / BS) Electrical Engineering (BS) Elementary Education (BSEd) Environmental Science (BS) Finance (BS) Fishery Resources (BS) Food Science (BS) Forestry (BS) French (BA) Geography (BS) Geology (BS) History (BA) Industrial Technology (BS) Interior Architecture and Design (B) Journalism (BA / BS) Landscape Architecture (BS) Marketing (BS) Materials Science & Engineering (BS) Mathematics (BS) Mechanical Engineering (BS) Microbiology (BS) Operations Management (BS) Organizational Sciences (BS) Philosophy (BA / BS) Physics (BS) Political Science (BA / BS) Psychology (BA / BS) Public Relations (BA / BS) Secondary Education (BS.Ed.) Sociology (BA / BS) Spanish (BA) Theatre Arts (BA / BS) Wildlife Resources (BS)

University of Leeds England

www.leeds.ac.uk
internationaloffice@leeds.ac.uk

L3IFDHES	Entry Requirements	Year 1 Entry to
Business	Considered on a case by case basis	<ul style="list-style-type: none"> BA Business Management and the Human Resource BSc Accounting and Finance BSc Banking and Finance BA Human Resource Management BSc International Business BSc International Business and Finance BA Business Economics BA Business Management BSc Economics and Finance
Computing	Considered on a case by case basis	<ul style="list-style-type: none"> BSc MEng Computer Science with Artificial Intelligence BSc MEng Computer Science BSc Computer Science with Mathematics
Engineering	Considered on a case by case basis	<ul style="list-style-type: none"> BEng / MEng Mechanical Engineering, BEng / MEng Aeronautical and Aerospace Engineering BEng / MEng Automotive Engineering BEng / MEng Medical Engineering

University of Leicester England

www.le.ac.uk
admissions@le.ac.uk

L3IFDHES	Entry Requirements	Year 1 Entry to
Business	<p>Please refer to university website</p> <p>Offers will vary by course. For example, Management courses will require overall results of 70%, with 65% in additional units and Maths. For specific grade requirements, please contact the admissions team directly. admission will be subject to each student making a formal application, which will be considered in accordance with the normal University admission procedures. The University of Leicester does not guarantee entry as all applications will be assessed on their individual merits. The University reserves the right to revise these criteria as appropriate.</p>	<ul style="list-style-type: none"> Human Resource Management BA (with optional Year Abroad or Year in Industry) Management Studies BA (with optional Year Abroad or Year in Industry) Marketing BA (with optional Year Abroad or Year in Industry) Media and Communication BA (with optional year abroad) Media and Society BA (with optional year abroad) Film and Media Studies BA Journalism BA Journalism with Creative Writing BA Sociology BA (with optional semester abroad) Politics and Sociology BA (with optional year abroad)

I'd like to say "thank you" to myself for choosing the IFD. I was satisfied with the Computing stream of the programme and studied hard from the moment I enrolled. My English has greatly and rapidly improved through the practical courses that the programme offered.

Zhuangzhuang Xie

- Completed the Level 3 International Foundation Diploma for Higher Education Studies
- Accepted to study Computer Science at University of Leeds



University of Leicester England

www.le.ac.uk
admissions@le.ac.uk

L3IFDHES	Entry Requirements	Year 1 Entry to
Finance, Business	<p>Please refer to university website</p> <p>Offers will vary by course. For example, Management courses will require overall results of 70%, with 65% in additional units and Maths. For specific grade requirements, please contact the admissions team directly. admission will be subject to each student making a formal application, which will be considered in accordance with the normal University admission procedures. The University of Leicester does not guarantee entry as all applications will be assessed on their individual merits. The University reserves the right to revise these criteria as appropriate.</p>	<ul style="list-style-type: none"> Economics BSc (with optional Year Abroad or Year in Industry) Economics and Accounting BSc (with optional Year Abroad or Year in Industry) Economics and Business BSc (with optional Year Abroad or Year in Industry) Economics and Econometrics BSc (with optional Year Abroad or Year in Industry) Financial Economics and Banking BSc (with optional Year Abroad or Year in Industry) Financial Economics and Econometrics BSc (with optional Year Abroad or Year in Industry) Accounting BSc (with optional Year Abroad or Year in Industry) Accounting and Finance BSc (with optional Year Abroad or Year in Industry)
Any / relevant to study area	<p>Please refer to university website</p> <p>Offers will vary by course. For example, Management courses will require overall results of 70%, with 65% in additional units and Maths. For specific grade requirements, please contact the admissions team directly. admission will be subject to each student making a formal application, which will be considered in accordance with the normal University admission procedures. The University of Leicester does not guarantee entry as all applications will be assessed on their individual merits. The University reserves the right to revise these criteria as appropriate.</p>	<ul style="list-style-type: none"> All other undergraduate programmes

University of Liverpool England

www.liv.ac.uk
www.liverpool.ac.uk/study/international/contact-us

L3IFDHES	Entry Requirements	Year 1 Entry to
Business	<p>IELTS 6.0 (no band less than 5.5)</p> <p>All applications will be considered on a case-by-case basis</p>	<ul style="list-style-type: none"> Business Economics with a Year in Industry BA (Hons) Business Management BA (Hons) Business Management with a Year in Industry BA (Hons) Economics BSc (Hons) Economics with a Year in Industry BSc (Hons) International Business BA (Hons) International Business with a Year in Industry BA (Hons) Marketing BA (Hons) Marketing with a Year in Industry BA (Hons) Accounting and Finance BA (Hons) Accounting and Finance with a Year in Industry BA (Hons)
	<p>IELTS 6.5 (no band less than 6.0)</p> <p>All applications will be considered on a case-by-case basis</p>	<ul style="list-style-type: none"> Business Economics BA (Hons)
Computing	<p>IELTS 6.0 (no band less than 5.5)</p> <p>All applications will be considered on a case-by-case basis</p>	<ul style="list-style-type: none"> Computer Science BSc (Hons) Computer Science MEng (Hons) Computer Science with a Year in Industry BSc (Hons) Financial Computing BSc (Hons) Financial Computing with a Year in Industry BSc (Hons) Mathematics and Computer Science BSc (Joint Honours) Mathematics and Computer Science with a Year in Industry BSc (Joint Honours) Computer Science with Software Development BSc (Hons) Computer Science with Software Development with a Year in Industry BSc (Hons)

University of London (International Programmes - in country)

Worldwide

www.londoninternational.ac.uk
enquiries.londoninternational.ac.uk

L3IFDHES	Entry Requirements	Year 1 Entry to
Any / relevant to study area	Pass in English for Academic Purposes 40% Pass	<ul style="list-style-type: none"> BA (Hons) English BA (Hons) History Bachelor of Divinity BA (Hons) Philosophy
Business	Pass in English for Academic Purposes 40% Pass including Pass in Foundation Mathematics	<ul style="list-style-type: none"> LLB Law BSc (Hons) Business Administration BSc (Hons) Marketing BSc (Hons) Business and Management BSc (Hons) Economics BSc (Hons) Economics and Management BSc (Hons) Finance BSc (Hons) Accounting and Finance BSc (Hons) Economics and Finance BSc (Hons) Banking & Finance BSc (Hons) International Relations BSc (Hons) Management & Digital Innovation
Computing	Pass in English for Academic Purposes 40% Pass including Pass in Foundation Mathematics	<ul style="list-style-type: none"> BSc Computer Science
Finance	Pass in English for Academic Purposes 40% Pass including Pass in Further Mathematics	<ul style="list-style-type: none"> BSc (Hons) Data Science & Business Analytics BSc (Hons) Mathematics & Economics

University of Nicosia Medical School

Cyprus

GUARANTEED INTERVIEW
www.med.unic.ac.cy
admissions@med.unic.ac.cy

L3IFDHES	Entry Requirements	Year 1 Entry to
Health Sciences	Overall 6.5 (6.5 in writing and no band less than 6.0) Guaranteed progression to interview stage with minimum overall 70% and similar grades in Biology, plus one more Science	<ul style="list-style-type: none"> Doctor of Medicine MD-6

University of North Alabama

USA

www.una.edu
international@una.edu

L3IFDHES	Entry Requirements	Year 1 Entry to
Any / relevant to study area	<p>IELTS 5.5 (Students without IELTS / TOEFL / TOEIC will be required to take English Placement Test and ESL courses may be required depending on the results)</p> <p>Overall average of 42% (Pass) credit transfer to GEN Ed courses available</p>	<ul style="list-style-type: none"> Accounting Biology Chemistry Communication Arts Computer Information Systems Computer Science Criminal Justice Early Childhood Education (P-3) Earth Systems Sustainability Economics Elementary Education (K-6) Engineering Technology English Entertainment Industry Finance Foreign Languages Geography History Marine Biology Mass Communication Mathematics Military Science (minor) Music Nursing Online Physics Political Science Professional Management Professional Marketing Psychology Secondary Education Social Science Social Work Sociology Special Education Collaborative Teaching (K-6) Theatre

University of Northampton England

www.northampton.ac.uk
admissions@northampton.ac.uk

L3IFDHES	Entry Requirements	Year 1 Entry to
Business	IELTS 6.0 (no band less than 5.5) Overall average of 40% (Pass)	<ul style="list-style-type: none"> BA (Hons) Business Studies
Computing	IELTS 6.0 (no band less than 5.5) Overall average of 40% (Pass)	<ul style="list-style-type: none"> BSc (Hons) Computing BSc (Hons) Computing (Computer Networks Engineering) BSc (Hons) Computing (Computer Systems Engineering) BSc (Hons) Computing (Web Technology & Security) BSc (Hons) Computing (Mobile Application Development) BSc (Hons) Computing (Software Engineering) BSc (Hons) Business Computing (Systems)

University of Nottingham England

www.nottingham.ac.uk
nottingham.ac.uk/studywithus/international-applicants/contact-us/contacts.aspx

L3IFDHES	Entry Requirements	Year 1 Entry to
Business	IELTS 6.5 overall with no less than 6.0 in each element (or recognised UoN equivalent). Overall average of 80%, including 80% in Foundation Mathematics or GCSE Maths at Grade 6/B	<ul style="list-style-type: none"> BSc (Hons) Accountancy (Flying Start) BSc (Hons) Finance, Accounting and Management BSc (Hons) International Management BSc (Hons) Industrial Economics BSc (Hons) Industrial Economics with Insurance BSc (Hons) Management

University of Nottingham Malaysia Malaysia

www.nottingham.edu.my/index.aspx
study@nottingham.edu.my

L3IFDHES	Entry Requirements	Year 1 Entry to
Business, Higher Finance	<p>Please refer to university website</p> <p>Overall average grade of 60% with at least 60% in Foundation Mathematics. Applicants who do not meet the Foundation Mathematics requirement must have grade B in mathematics for SPM/ GCSE/ IGCSE/ High School Diploma or equivalent.</p>	<ul style="list-style-type: none"> Nottingham University Business School
	<p>Please refer to university website</p> <p>Overall average grade of 60% with at least 65% in Foundation Mathematics. Applicants who do not meet the Foundation Mathematics requirement must have grade A in mathematics for SPM/ GCSE/ IGCSE/ High School Diploma or equivalent.</p>	<ul style="list-style-type: none"> School of Economics
Engineering, Chemical Engineering	<p>Please refer to university website</p> <p>Overall average grade of 60% with at least 60% in Foundation Mathematics and Further Mathematics. Students completing the Computing stream must also achieve a grade B equivalent in Further Mathematics.</p>	<ul style="list-style-type: none"> School of Computer Science Department of Chemical and Environmental Engineering

University of Nottingham Malaysia

www.nottingham.edu.my/index.aspx
study@nottingham.edu.my

L3IFDHES	Entry Requirements	Year 1 Entry to
Health Sciences, Engineering, Chemical Engineering	Please refer to university website Overall average grade of 60% with at least 60% in prerequisite A level subjects. Further Mathematics is an acceptable equivalent to A Level Mathematics for entry onto courses with a Mathematics A Level requirement.	<ul style="list-style-type: none"> School of Environmental and Geographical Sciences
	Please refer to university website Overall average grade of 60% with at least 60% in prerequisite A level subjects. Further Mathematics is an acceptable equivalent to A Level Mathematics for entry onto courses with a Mathematics A Level requirement. Students completing the Business, Finance and Computing streams may be considered for Psychology on a case-by-case basis together with SPM/ GCSE/ IGCSE/ High School Diploma or equivalent qualifications (i.e. grade B in mathematics and at least a credit in a science) subject)	<ul style="list-style-type: none"> School of Psychology
Higher Finance, Engineering, Chemical Engineering	Please refer to university website Overall average grade of 60% with at least 60% in prerequisite A level subjects. Further Mathematics is an acceptable equivalent to A Level Mathematics for entry onto courses with a Mathematics A Level requirement.	<ul style="list-style-type: none"> Department of Applied Mathematics

University of Plymouth England

www.plymouth.ac.uk
international-admissions@plymouth.ac.uk

L3IFDHES	Entry Requirements	Year 1 Entry to
Business	IELTS 6.0 (no band less than 5.5) Overall average of 55% overall with a minimum of 50% in each module	<ul style="list-style-type: none"> BA (Hons) Accounting and Finance BSc (Hons) Economics BSc (Hons) Business Economics BSc (Hons) International Business Economics BSc (Hons) Financial Economics BSc (Hons) Business Management BA (Hons) International Business BSc (Hons) Marketing BSc (Hons) Maritime Business and Maritime Law BSc (Hons) Maritime Business and Logistics BSc (Hons) Tourism Management BSc (Hons) Events Management BSc (Hons) Tourism and Hospitality Management BSc (Hons) International Hospitality Management BSc (Hons) Hospitality Management BSc (Hons) Cruise Management
Computing	IELTS 6.0 (no band less than 5.5) Overall average of 60% including 60% in both IT electives and 60% in Foundation Maths	<ul style="list-style-type: none"> BSc (Hons) Computer Science

University of South Wales Wales

www.southwales.ac.uk
myusw.southwales.ac.uk/contact-us

L3IFDHEs	Entry Requirements	Year 1 Entry to
Business	IELTS 6.0 (no band less than 5.5). Students who have achieved 60% or above in the English Language AELS and DELS modules satisfy the IELTS 6.0 entry requirement. Overall average of 40% (Pass)	<ul style="list-style-type: none"> BA (Hons) Business and Management BA (Hons) Marketing Management BA (Hons) Hotel and Hospitality Management BA (Hons) Human Resource Management BA (Hons) Logistics, Procurement and Supply Chain Management BA (Hons) International Events Management BA (Hons) International Business and Management
	IELTS 6.0 (no band less than 5.5) overall average of 40% (Pass)	<ul style="list-style-type: none"> BA (Hons) International Business and Management
Computing	IELTS 6.0 (no band less than 5.5). Students who have achieved 60% or above in the English Language AELS and DELS modules satisfy the IELTS 6.0 entry requirement. Overall average of 40% (Pass) 60% in Introduction to Computer Science and Introduction to Programming	<ul style="list-style-type: none"> BSc (Hons) Applied Cyber Security BSc (Hons) Computer Science BSc (Hons) Computer Forensics BSc (Hons) Computer Games Development BSc (Hons) Computer Security BSc (Hons) Information Computer Technology
Engineering	IELTS 6.0 (no band less than 5.5). Students who have achieved 60% or above in the English Language AELS and DELS modules satisfy the IELTS 6.0 entry requirement. Overall average of 40% (Pass). 60% in Physics & Further Maths	<ul style="list-style-type: none"> BSc (Hons) / BEng (Hons) Civil Engineering BEng (Hons) Electrical and Electronic Engineering BEng (Hons) Mechanical Engineering
	IELTS 6.0 (no band less than 5.5). Students who have achieved 60% or above in the English Language AELS and DELS modules satisfy the IELTS 6.0 entry requirement. Overall average of 40% (Pass). 60% in Physics & Further Maths	<ul style="list-style-type: none"> BEng (Hons) Aeronautical Engineering BSc (Hons) Aircraft Engineering and Maintenance Systems BEng (Hons) Automotive Engineering
	IELTS 6.0 (no band less than 5.5) overall average of 40% (Pass). 60% in Physics & Further Maths	<ul style="list-style-type: none"> BSc (Hons) Mechanical Engineering BEng (Hons) Mechanical Engineering

University of Strathclyde Scotland

www.strath.ac.uk

L3IFDHEs	Entry Requirements	Year 1 Entry to
Any relevant stream	IELTS at 6.5 with no component below 5.5 Merit grade of 60% or above	<ul style="list-style-type: none"> BA (Hons) Business BA (Hons) International Business BA (Hons) Business Enterprise BBA (Hons) Business Administration BA (Hons) Business Enterprise & Business Law BA (Hons) Human Resource Management & Business Law BA (Hons) Business Analysis and Technology & Economics BA (Hons) Business Analysis & Technology BA (Hons) Business Analysis and Technology & Business Law BA (Hons) Business Enterprise & Marketing BA (Hons) Business Analysis and Technology & Business Enterprise BA (Hons) Finance & Business Law BA (Hons) Economics & Business Law BA (Hons) Law & Economics BA (Hons) Marketing BA (Hons) Business Analysis and Technology & Finance BA (Joint Hons) Marketing & Psychology BA (Hons) Business Enterprise & Economics BA (Hons) Business Enterprise & Hospitality and Tourism Management BA (Hons) Economics BA Accounting & Business Law BA (Hons) Marketing & Business Law BA (Hons) Business Enterprise & Finance BA (Hons) Accounting & Business Enterprise BA (Joint Hons) Finance & Marketing BA (Joint Hons) Accounting & Finance BA Accounting & Marketing BA (Hons) Hospitality and Tourism Management & Human Resource Management BA (Hons) Politics and International Relations & Human Resource Management BA (Hons) Accounting & Hospitality and Tourism Management BA (Hons) Hospitality and Tourism Management & Marketing BA (Hons) Finance & Hospitality and Tourism Management BA (Hons) Psychology & Human Resource Management BA (Hons) Economics & Marketing BA (Hons) Economics & Finance BA (Hons) Finance BA (Hons) Accounting BA (Hons) Hospitality & Tourism Management BA (Hons) Intercultural Communications for Global Business

University of Sunderland England

www.sunderland.ac.uk
international.enquiries@sunderland.ac.uk
london.sunderland.ac.uk
recruitment-london@sunderland.ac.uk

L3IFDHES	Entry Requirements	Year 1 Entry to
Business	<p>IELTS overall score of 6.0, with at least 5.5 or higher in each component</p> <p>Minimum 40% overall</p>	<ul style="list-style-type: none"> BSc (Hons) Management BSc (Hons) Digital Management BA (Hons) Marketing BA (Hons) Business and Management BA (Hons) Business and Financial Management BA (Hons) Business and Marketing Management BA (Hons) Business and Human Resource Management BA (Hons) Business and Economics BSc (Hons) Tourism and Aviation Management BSc (Hons) Tourism Management BA (Hons) Events Management BSc (Hons) International Tourism and Hospitality Management
Computing	<p>IELTS overall score of 6.0, with at least 5.5 or higher in each component</p> <p>Minimum 40% overall</p>	<ul style="list-style-type: none"> BSc (Hons) Web and Mobile Developing BSc (Hons) Cybersecurity and Digital Forensics BSc (Hons) Game Development BSc (Hons) Business Technology BSc (Hons) Networks and Cybersecurity
Engineering	<p>IELTS overall score of 6.0, with at least 5.5 or higher in each component</p> <p>Minimum 40% overall</p>	<ul style="list-style-type: none"> BEng (Hons) Mechanical Engineering BEng (Hons) Automotive Engineering BEng (Hons) Electronic and Electrical Engineering BEng (Hons) Manufacturing Engineering
Health Sciences	<p>IELTS overall score of 6.0, with at least 5.5 or higher in each component</p> <p>Minimum 40% overall</p>	<ul style="list-style-type: none"> BSc (Hons) Biomedical Science BSc (Hons) Physiological Sciences BSc (Hons) Psychology

University of Sunderland Hong Kong Hong Kong

www.sunderland.edu.hk

L3IFDHES	Entry Requirements	Year 1 Entry to
Business	<p>IELTS overall score of 6.0, with at least 5.5 or higher in each component</p> <p>Minimum 40% overall</p> <p>Please check your eligibility before contacting the international office: https://www.immd.gov.hk/pdforms/ID(E)996.pdf</p>	<ul style="list-style-type: none"> Bachelor of Arts (Hons) Business and Management Bachelor of Arts (Hons) Business and Human Resource Management

University of Sussex England

www.sussex.ac.uk
study@sussex.ac.uk

L3IFDHES	Entry Requirements	Year 1 Entry to
Any / relevant to study area	<p>Please see University of Sussex website: https://www.sussex.ac.uk/study/undergraduate/apply/international-qualifications/english-language-requirements</p> <p>All applications will be considered on a case-by-case basis only</p>	Students will be considered for undergraduate degrees on a case-by-case basis

University of the West of England (UWE Bristol) England

www.uwe.ac.uk
international@uwe.ac.uk

L3IFDHEs	Entry Requirements	Year 1 Entry to
Business	IELTS 6.0 (no band less than 5.5) Overall average of 40% (Pass). Applications will be considered on an individual basis	<ul style="list-style-type: none"> BA (Hons) Accounting and Management BA (Hons) Business (Team Entrepreneurship) BA (Hons) Business and Events Management BA (Hons) Business and Human Resource Management BA (Hons) Business and Law BA (Hons) Business and Management BA (Hons) Business Management and Economics BA (Hons) Business Management with Marketing BSc (Hons) Economics BSc (Hons) Accounting BA (Hons) Accounting and Finance BA (Hons) Banking and Finance BA (Hons) International Business BA (Hons) Marketing BA (Hons) Sports Business and Entrepreneurship
Computing	IELTS 6.0 (no band less than 5.5) Overall average of 40% (Pass). Applications will be considered on an individual basis.	<ul style="list-style-type: none"> BSc (Hons) Applied Computing BSc (Hons) Business Computing BSc (Hons) Computer Science BSc (Hons) Computing BSc (Hons) Forensic Computing and Security BSc (Hons) Games Technology BSc (Hons) Digital Media BSc (Hons) Information Technology Management for Business BSc (Hons) Information Technology BSc (Hons) Software Engineering for Business

University of Westminster England

www.westminster.ac.uk
studentadvice@westminster.ac.uk

L3IFDHEs	Entry Requirements	Year 1 Entry to
Business	IELTS 6.0 (no band less than 5.5) Overall average of 60% (Merit)	<ul style="list-style-type: none"> BA (Hons) Business Management BA (Hons) Business Management (Accounting) BA (Hons) Business Management (Economics) BA (Hons) Business Management (Entrepreneurship) BA (Hons) Business Management (Finance) BA (Hons) Business Management (HR Management) BA (Hons) Business Management (Marketing) BA (Hons) Marketing Communications BA (Hons) Marketing Management BA (Hons) International Marketing BA (Hons) Criminology BA (Hons) Sociology & Criminology BA (Hons) Sociology BA (Hons) History BA (Hons) International Relations and Development BA (Hons) International Relations BA (Hons) Politics and International Relations BA (Hons) Politics
	IELTS 6.0 (no band less than 5.5) Overall average of 60% (Merit) with a minimum of 60% in Intro to Business module	<ul style="list-style-type: none"> BA (Hons) Finance BSc (Hons) Business Economics
	IELTS 6.0 (no band less than 5.5) Overall average of 60% (Merit) with a minimum of 60% in Intro to Business, Intro to Accounting & Economics & Mathematics modules	<ul style="list-style-type: none"> BA (Hons) International Business
Computing or Engineering	IELTS 6.0 (no band less than 5.5) Pass all modules with at least 60% (Merit)	<ul style="list-style-type: none"> BSc (Hons) Computer Network Security

University of Worcester England

www.worc.ac.uk
international@worc.ac.uk

L3IFDHEs	Entry Requirements	Year 1 Entry to
Business	IELTS 6.0 (no band less than 5.5) Overall average of 40% (Pass)	<ul style="list-style-type: none"> BA (Hons) Business Management BA (Hons) Marketing BA (Hons) Marketing, Advertising and Public Relations BA (Hons) Business and Finance BA (Hons) Business and Marketing BA (Hons) Accounting and Finance BA (Hons) Business, Economics & Finance BSc (Hons) Business Information Technology FdA / BA (Hons) Leadership and Management BA (Hons) Business Studies BA (Hons) Business and Human Resource Management
Computing	IELTS 6.0 (no band less than 5.5) Overall average of 40% (Pass)	<ul style="list-style-type: none"> BSc (Hons) Computing BSc (Hons) Computer Games Design and Development

University of York England

www.york.ac.uk
international-support@york.ac.uk

L3IFDHEs	Entry Requirements	Year 1 Entry to
Business	<p>Please refer to the university website</p> <p>Course Listings are indicative. Entry on to all undergraduate programmes will be considered on a case-by-case basis. IFY recognition based on the following A-level equivalencies:</p> <p>AAA = 72% AAB = 70% ABB = 68% BBB = 65%</p> <p>Please note some academic departments will have additional module requirements depending on the programme being applied to.</p>	<ul style="list-style-type: none"> BA Business and Management BA Business and Management with a year in industry BSc Business and Management BSc Business and Management with a year in industry BSc Accounting, Business Finance and Management BSc Accounting, Business Finance and Management with a year in industry BSc Marketing BSc Marketing with a year in industry BSc Actuarial Science BSc Actuarial Science with a year in industry

University of York England

www.york.ac.uk
international-support@york.ac.uk

L3IFDHEs	Entry Requirements	Year 1 Entry to
Computing	<p>Please refer to the university website</p> <p>Course Listings are indicative. Entry on to all undergraduate programmes will be considered on a case-by-case basis. IFY recognition based on the following A-level equivalencies:</p> <p>AAA = 72% AAB = 70% ABB = 68% BBB = 65%</p> <p>Please note some academic departments will have additional module requirements depending on the programme being applied to.</p>	<ul style="list-style-type: none"> BSc Computer Science BSc Computer Science with a year in industry MEng Computer Science with Artificial Intelligence MEng Computer Science with Artificial Intelligence with a year in industry BSc Computer Science and Mathematics (Equal) BSc Computer Science and Mathematics (Equal) with a year in industry BSc Mathematics and Computer Science (Equal) BSc Mathematics and Computer Science (Equal) with a year in industry
Engineering	<p>Please refer to university website</p> <p>Course Listings are indicative. Entry on to all undergraduate programmes will be considered on a case-by-case basis. IFY recognition based on the following A-level equivalencies:</p> <p>AAA = 72% AAB = 70% ABB = 68% BBB = 65%</p> <p>Please note some academic departments will have additional module requirements depending on the programme being applied to.</p>	<ul style="list-style-type: none"> MEng (Hons) Electronic Engineering MEng (Hons) Robotic Engineering MEng (Hons) Engineering MEng (Hons) Medical Engineering BEng (Hons) Electronic Engineering MEng (Hons) Electronic and Communication Engineering MEng (Hons) Electronic and Computer Engineering BEng (Hons) Electronic and Communication Engineering BEng (Hons) Electronic and Computer Engineering MEng (Hons) Engineering (with a year in industry) MEng (Hons) Micro-mechanical Engineering MEng (Hons) Electronic Engineering with Nanotechnology BEng (Hons) Electronic Engineering with Nanotechnology MEng (Hons) Electronic and Electrical Engineering BEng (Hons) Electronic and Electrical Engineering MEng (Hons) Electronic Engineering (with a year in industry) MEng (Hons) Electronic and Computer Engineering (with a year in industry) BEng (Hons) Electronic and Communication Engineering (with a year in industry) MEng (Hons) Electronic and Communication Engineering (with a year in industry) MEng (Hons) Medical Engineering (with a year in industry)

University of York England

www.york.ac.uk
international-support@york.ac.uk

L3IFDHES	Entry Requirements	Year 1 Entry to
Engineering	<p>Please refer to university website</p> <p>Course Listings are indicative. Entry on to all undergraduate programmes will be considered on a case-by-case basis. IFY recognition based on the following A-level equivalencies:</p> <p>AAA = 72% AAB = 70% ABB = 68% BBB = 65%</p> <p>Please note some academic departments will have additional module requirements depending on the programme being applied to.</p>	<ul style="list-style-type: none"> • MEng (Hons) Electronic Engineering with Business Management • MEng (Hons) Electronic Engineering with Music Technology Systems • BEng (Hons) Electronic Engineering with Business Management • MEng (Hons) Electronic Engineering with Nanotechnology (with a year in industry) • BEng (Hons) Electronic Engineering (with a year in industry) • BEng (Hons) Electronic and Computer Engineering (with a year in industry) • MEng (Hons) Robotic Engineering (with a year in industry) • MEng (Hons) Micro-mechanical Engineering (with a year in industry) • BEng (Hons) Electronic Engineering with Music Technology Systems • MEng (Hons) Electronic and Electrical Engineering (with a year in industry) • BEng (Hons) Electronic Engineering with Business Management (with a year in industry)
Finance	<p>Please refer to university website</p> <p>Course Listings are indicative. Entry on to all undergraduate programmes will be considered on a case-by-case basis. IFY recognition based on the following A-level equivalencies:</p> <p>AAA = 72% AAB = 70% ABB = 68% BBB = 65%</p> <p>Please note some academic departments will have additional module requirements depending on the programme being applied to.</p>	<ul style="list-style-type: none"> • BSc (Hons) Economics • BSc (Hons) Economics and Econometrics • BSc (Hons) Economics and Finance • BSc (Hons) Economics, Econometrics and Finance • BSc (Hons) Economics and Mathematics • BSc (Hons) Mathematics and Finance

University of York England

www.york.ac.uk
international-support@york.ac.uk

L3IFDHES	Entry Requirements	Year 1 Entry to
Health Sciences	<p>Please refer to university website</p> <p>Course Listings are indicative. Entry on to all undergraduate programmes will be considered on a case-by-case basis. IFY recognition based on the following A-level equivalencies:</p> <p>AAA = 72% AAB = 70% ABB = 68% BBB = 65%</p> <p>Please note some academic departments will have additional module requirements depending on the programme being applied to. Applicants will also need to meet Maths, English and Science GCSE requirements or equivalent.</p>	<ul style="list-style-type: none"> • BSc (Hons) Nursing (Adult) • BSc (Hons) Nursing (Child) • BSc (Hons) Nursing (Mental Health) • MNurs (Hons) Masters in Nursing (Adult) • MNurs (Hons) Masters in Nursing (Child) • MNurs (Hons) Masters in Nursing (Mental Health) • BA (Hons) Midwifery Practice
Any / relevant to study area	<p>Please refer to university website</p> <p>Course Listings are indicative. Entry on to all undergraduate programmes will be considered on a case-by-case basis. IFY recognition based on the following A-level equivalencies:</p> <p>AAA = 72% AAB = 70% ABB = 68% BBB = 65%</p> <p>Please note some academic departments will have additional module requirements depending on the programme being applied to.</p>	<ul style="list-style-type: none"> • BA (Hons) Sociology • BA (Hons) Sociology with Criminology • BA (Hons) Sociology with Social Psychology

Victoria University of Wellington

New Zealand

www.wgtn.ac.nz
international@vuw.ac.nz

L3IFDHES	Entry Requirements	Year 1 Entry to
Any / relevant to study area	<p>https://www.wgtn.ac.nz/international/applying/entry-requirements#ug</p> <p>Overall average of 40% (Pass); Where degree courses have pre-requisite subjects, applicants must successfully complete the relevant NCC International Foundation Diploma stream to meet the required pre-requisites and achieve a comparable academic grade</p>	<ul style="list-style-type: none"> • Bachelor of Architectural Studies <i>Majors available in:</i> <ul style="list-style-type: none"> - Architecture - Interior Architecture - Landscape Architecture - Architecture History and Theory • Bachelor of Arts <i>Majors available in:</i> <ul style="list-style-type: none"> - Art History - Asian Studies - Chinese - Classical Studies - Criminology - Cultural Anthropology - Data Science - Development Studies - Economics - Education - Education and Psychology - English Literature - Film - French - Geography - German - Greek - History - International Relations - Italian - Japanese - Latin - Linguistics - Māori Resource Management - Māori Studies - Mathematics - Media Studies - Modern Language Studies - Music - Pacific Studies - Philosophy - Political Science - Psychology - Public Policy - Religious Studies - Samoan Studies / Matā'upu tau Sāmoa - Sociology - Spanish - Te Reo Māori - Teaching English to Speakers of Other Languages (TESOL) - Theatre

Victoria University of Wellington

New Zealand

www.wgtn.ac.nz
international@vuw.ac.nz

L3IFDHES	Entry Requirements	Year 1 Entry to
Any / relevant to study area	<p>https://www.wgtn.ac.nz/international/applying/entry-requirements#ug</p> <p>Overall average of 40% (Pass); Where degree courses have pre-requisite subjects, applicants must successfully complete the relevant NCC International Foundation Diploma stream to meet the required pre-requisites and achieve a comparable academic grade</p>	<ul style="list-style-type: none"> • Bachelor of Biomedical Science <i>Majors available in:</i> <ul style="list-style-type: none"> - Human Genetics - Molecular Pathology - Molecular Pharmacology and Medicinal Chemistry • Bachelor of Building Science <i>Majors available in:</i> <ul style="list-style-type: none"> - Project Management - Sustainable Engineering Systems - Project Management and Sustainable Engineering Systems • Bachelor of Commerce <i>Majors available in:</i> <ul style="list-style-type: none"> - Accounting - Actuarial Science - Commercial Law - Data Science - Economics - Finance - Human Resource Management and Employment Relations - Information Systems - International Business - Management - Marketing - Public Policy - Taxation - Tourism Management • Bachelor of Communication <i>Majors available in:</i> <ul style="list-style-type: none"> - Intercultural Communication - Linguistics - Literary and Creative Communication - Marketing Communication - Media Studies - Political Communication - Science Communication • Bachelor of Design Innovation <i>Majors available in:</i> <ul style="list-style-type: none"> - Animation and Visual Effects - Communication Design - Design for Social Innovation - Fashion Design Technology - Game Design - Industrial Design - Interaction Design - Media Design

Victoria University of Wellington

New Zealand

www.wgtn.ac.nz
international@vuw.ac.nz

L3IFDHES	Entry Requirements	Year 1 Entry to
Any / relevant to study area	<p>https://www.wgtn.ac.nz/international/applying/entry-requirements#ug</p> <p>Overall average of 40% (Pass); Where degree courses have pre-requisite subjects, applicants must successfully complete the relevant NCC International Foundation Diploma stream to meet the required pre-requisites and achieve a comparable academic grade</p>	<ul style="list-style-type: none"> • Bachelor of Education (Teaching) Early Childhood • Bachelor of Engineering with Honours <i>Majors available in:</i> <ul style="list-style-type: none"> - Cybersecurity Engineering - Electrical and Electronic Engineering - Software Engineering • Bachelor of Global Studies • Bachelor of Health <i>Majors available in:</i> <ul style="list-style-type: none"> - Health Informatics - Health Promotion - Health Psychology - Health Software Development - Population Health, Policy and Service Delivery • Bachelor of Laws • Bachelor of Laws with Honours • Bachelor of Midwifery • Bachelor of Science <i>Majors available in:</i> <ul style="list-style-type: none"> - Actuarial Science - Artificial Intelligence - Biology - Biotechnology - Cell and Molecular Bioscience - Chemistry - Computer Graphics and Games - Computer Science - Data Science - Development Studies - Ecology and Biodiversity - Electronic and Computer Systems - Environmental Science - Environmental Studies - Geography - Geology - Geophysics - Meteorology - Geophysics - Solid Earth - Marine Biology - Mathematics - Physical Geography - Physics - Psychology - Renewable Energy Systems - Science Communication - Statistics

Westminster International University in Tashkent

Uzbekistan

www.wiut.uz
info@wiut.uz

L3IFDHES	Entry Requirements	Year 1 Entry to
Any / relevant to study area	Applications for Year 2 Admission will be reviewed on a case-by-case basis	<ul style="list-style-type: none"> • All subject areas

XJTLU Xi'an Jiaotong-Liverpool University

China

www.xjtlu.edu.cn/zh
International@xjtlu.edu.cn

L3IFDHES	Entry Requirements	Year 1 Entry to
	<p>Please refer to university website</p> <p>All applications will be considered on a case-by-case basis for Year 2 admission (Year 2 is equivalent to Year 1 of a UK degree)</p>	<ul style="list-style-type: none"> • All subject areas

York University Canada

www.yorku.ca
international@yorku.ca

L3IFDHES	Entry Requirements	Year 1 Entry to
Any / relevant to study area	Specific course pre-requisite requirements and admission averages vary by program at York University. Program-specific and general admission standards and language requirements are available at: http://futurestudents.yorku.ca/requirements/international	<ul style="list-style-type: none"> • Various in the Faculty of Environmental Studies • Various in the School of the Arts, Media, Performance & Design • Various within Glendon College
Business	Specific course pre-requisite requirements and admission averages vary by program at York University. Program-specific and general admission standards and language requirements are available at: http://futurestudents.yorku.ca/requirements/international	<ul style="list-style-type: none"> • Bachelor of Business Administration • International Bachelor of Business Administration • Various in the Osgoode Hall Law School
Engineering	Specific course pre-requisite requirements and admission averages vary by program at York University. Program-specific and general admission standards and language requirements are available at: http://futurestudents.yorku.ca/requirements/international	<ul style="list-style-type: none"> • Various in the Lassonde School of Engineering
Health Sciences	Specific course pre-requisite requirements and admission averages vary by program at York University. Program-specific and general admission standards and language requirements are available at: http://futurestudents.yorku.ca/requirements/international	<ul style="list-style-type: none"> • Various within the school of Health • Various within the Faculty of Science



- Completed the Level 3 International Foundation Diploma for Higher Education Studies
- Accepted to study BSc (Hons) Computer Science at Coventry University



ENGLAND

- **University of Sussex**
BSc (Hons) Business and Management Studies
- **University of York**
BSc (Hons) Film and Television Production, BSc (Hons) Accounting, Business Finance and Management
- **University of Southampton**
BSc (Hons) Business Analytics
- **University of the West of England: Bristol**
BSc (Hons) Cyber Security and Digital Forensics

- **Leeds Beckett University**
BA (Hons) International Relations

- **University of Salford**
LLB (Hons) Law

WALES

- **Swansea University**
BSc (Hons) Computer Science
- **Bangor University**
BSc (Hons) Business Management

AUSTRALIA

- **University of Adelaide**
Bachelor of Computer Science

SINGAPORE

- **Curtin Singapore**
Bachelor of Commerce, Bachelor of Computing
- **James Cook University Singapore**
Bachelor of Business (Majoring in International Business)

CHINA

- **Beijing Normal University-Hong Kong Baptist University, United International College**
BA (Hons) Business Administration
- **Jinan University-University of Birmingham Joint Institute, Jinan University**
BSc (Hons) Applied Mathematics with Information Computing Science

WHERE STUDENTS WENT



** Students holding the NCC Education L3IFDHES have self-reported successful applications to English-taught bachelor programmes at the above universities commencing 2022-2023 and 2023-2024. This data does not constitute confirmation of an official progression pathway and is for illustrative purposes only. Here is a snapshot of where NCC Education's Level 3 International Foundation Diploma for Higher Education Studies graduates progressed!*

If you would like to tell us where you progressed to in 2022/2023 please go to www.nccedu.com/student-feedback

**For more
information
contact us
today**

NCC Education UK (Head Office)

Second Floor, Adamson House
Towers Business Park
Wilmslow Road, Didsbury,
Manchester
M20 2YY
United Kingdom

t : +44 (0) 161 438 6200
e : customer.support@nccedu.com
w : www.nccedu.com

Regional Offices

SOUTH AFRICA

Cape Town

e : customer.support@nccedu.com

CHINA

Beijing

t : +86 (0) 10 6520 4030

MALAYSIA

Kuala Lumpur

t : +60 11 6339 6200

[!\[\]\(f60b7a900783ac3fd531bfd9c111be6d_img.jpg\)](#) | [!\[\]\(fe5cf1978663f480c504f8fc2019fe62_img.jpg\)](#) | [!\[\]\(3251ba33ee7a8fbbf21e8e8207062a79_img.jpg\)](#) | [!\[\]\(c1a98665bacc172e098c6f37717f87e5_img.jpg\)](#) | [!\[\]\(2fb06e195b16ba50a8e26637755ef33a_img.jpg\)](#) | [!\[\]\(2546c16c0747e72574fb436e811eacd9_img.jpg\)](#) | [!\[\]\(94b39f940a3d8689839f3645a30a2849_img.jpg\)](#) | **nccedu.com**

© NCC Education 2023, all rights reserved.

Please note that the information in this booklet is subject to change.

Information updated March 2023.